

EFHD1 Mouse Monoclonal Antibody

Catalog No: #38043

Orders: order@signalwayantibody.comSupport: tech@signalwayantibody.com

Description

| | |
|--------------------|--|
| Product Name | EFHD1 Mouse Monoclonal Antibody |
| Host Species | Mouse |
| Clonality | Monoclonal |
| Purification | Affinity purification using immunogen. |
| Applications | WB,IHC,IF |
| Species Reactivity | Hu Rt Ms |
| Specificity | EFHD1 Mouse Monoclonal antibody detects endogenous EFHD1 protein.s |
| Target Name | EFHD1 |
| Other Names | DKFZp781H0842; EF hand domain containing 1; EF hand domain family, member D1; EF-hand domain family, member D1 |
| Accession No. | Swiss-Prot#:Q9BUP0 |
| Uniprot | Q9BUP0 |
| GeneID | 80303; |
| SDS-PAGE MW | 26kd |
| Concentration | 1.0mg/ml |
| Formulation | Mouse IgG1 in phosphate buffered saline (without Mg ²⁺ and Ca ²⁺), pH 7.4, 150mM NaCl, 0.02% sodium azide and 50% glycerol. |
| Storage | Store at -20°C |

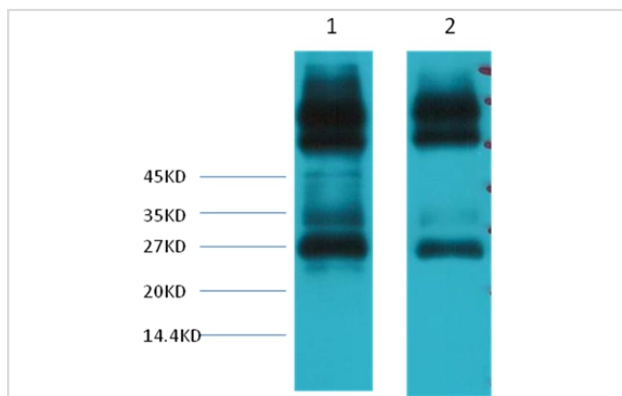
Application Details

WB dilution: 1:1000~1:3000

IF dilution: 1:100-200

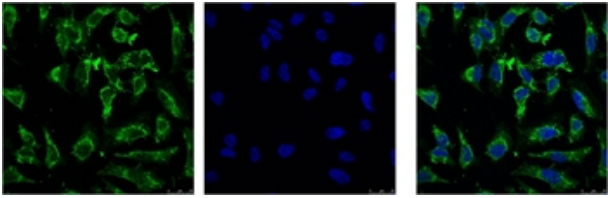
IHC dilution:1:50-300

Images

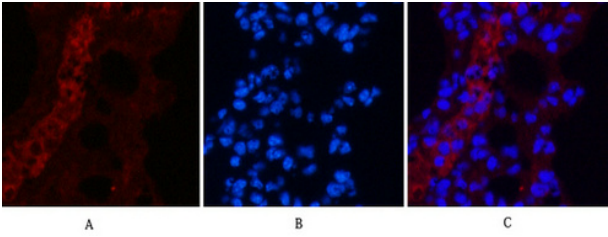


Western blot analysis of 1) Mouse spleen tissue, 2) Rat spleen tissue, using #38043 diluted at 1:3,000.

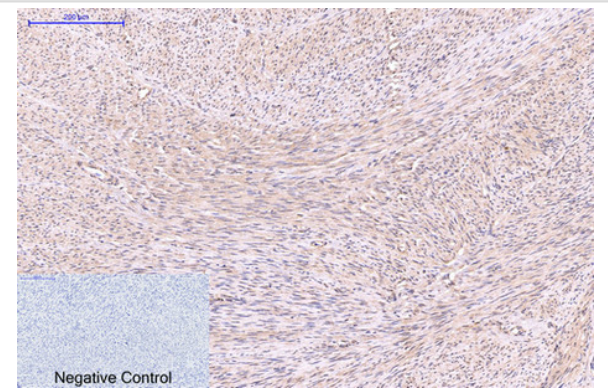
IF analysis of Hela with #38043(Left) and DAPI (Right) diluted at 1:100.



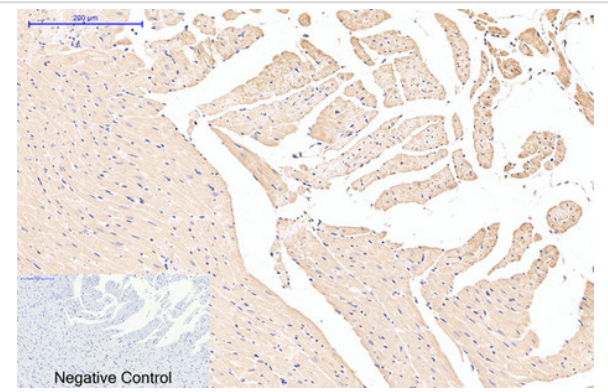
Immunofluorescence analysis of Mouse-lung tissue. 1, EFHD1 Monoclonal Antibody(3G2)(red) was diluted at 1:200(4C, overnight). 2, Cy3 labeled Secondary antibody was diluted at 1:300(room temperature, 50min). 3, Picture B: DAPI(blue) 10min. Picture A: Target. Picture C: merge of A+B



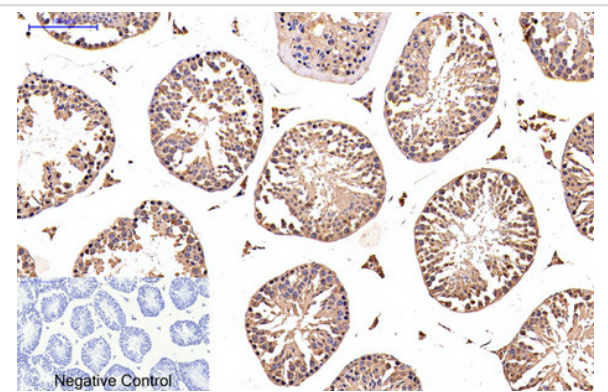
Immunohistochemical analysis of paraffin-embedded Human-uterus tissue. 1, EFHD1 Monoclonal Antibody(3G2) was diluted at 1:200(4C, overnight). 2, Sodium citrate pH 6.0 was used for antibody retrieval(>98C, 20min). 3, Secondary antibody was diluted at 1:200(room temperature, 30min). Negative control was used by secondary antibody only.



Immunohistochemical analysis of paraffin-embedded Rat-heart tissue. 1, EFHD1 Monoclonal Antibody(3G2) was diluted at 1:200(4C, overnight). 2, Sodium citrate pH 6.0 was used for antibody retrieval(>98C, 20min). 3, Secondary antibody was diluted at 1:200(room temperature, 30min). Negative control was used by secondary antibody only.



Immunohistochemical analysis of paraffin-embedded Mouse-testis tissue. 1, EFHD1 Monoclonal Antibody(3G2) was diluted at 1:200(4C, overnight). 2, Sodium citrate pH 6.0 was used for antibody retrieval(>98C, 20min). 3, Secondary antibody was diluted at 1:200(room temperature, 30min). Negative control was used by secondary antibody only.



Background

EFHD1 is an EF-hand domain-containing protein that displays increased expression during neuronal differentiation

Note: This product is for in vitro research use only