

CD16 Mouse Monoclonal Antibody (Q32)

Catalog No: #38047

Orders: order@signalwayantibody.com

Support: tech@signalwayantibody.com

Description

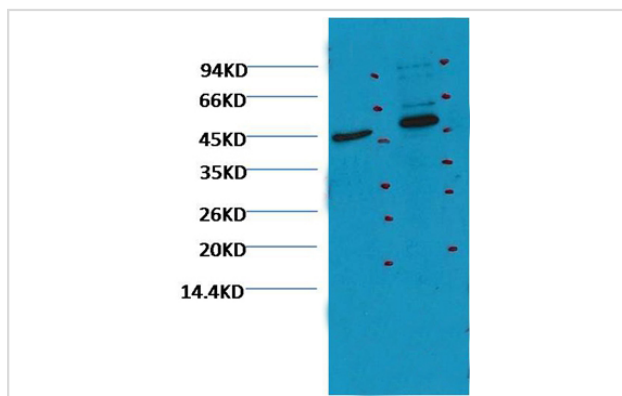
Product Name	CD16 Mouse Monoclonal Antibody (Q32)
Host Species	Mouse
Clonality	Monoclonal
Clone No.	Q32
Purification	Affinity purification using immunogen.
Applications	WB,IHC
Species Reactivity	Hu
Specificity	Antibody detects endogenous CD16 protein.
Target Name	CD16
Other Names	CD32; CD32A; CDw32; Fc fragment of IgG, low affinity IIa, receptor (CD32); Fc-gamma RII-a; Fc-gamma-RIIa; FCG2; FCG2A; FcGR; FCGR2; FCGR2A; FCGR2A1; FcRII-a; IGFR2
Accession No.	Swiss-Prot#:P12318
Uniprot	P12318
GeneID	2212;
SDS-PAGE MW	35kd
Concentration	1.0mg/ml
Formulation	Mouse IgG1 in phosphate buffered saline (without Mg ²⁺ and Ca ²⁺), pH 7.4, 150mM NaCl, 0.02% sodium azide and 50% glycerol.
Storage	Store at -20°C

Application Details

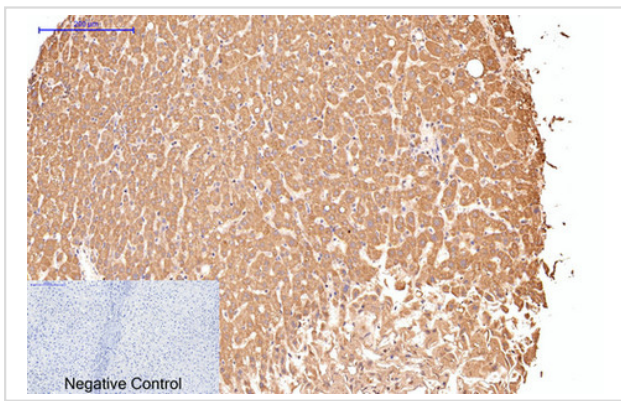
WB dilution: 1:1000~1:2000

IHC dilution:1:50-300

Images



Western blot analysis of 1) Jurkat, 2)K562 CD16 Mouse mAb(Q32) #38047



Immunohistochemical analysis of paraffin-embedded Human-liver tissue. 1,CD16 Monoclonal Antibody(Q32) was diluted at 1:200(4C,overnight). 2, Sodium citrate pH 6.0 was used for antibody retrieval(>98C,20min). 3,Secondary antibody was diluted at 1:200(room tempeRature, 30min). Negative control was used by secondary antibody only.

Background

CD16 is a low affinity Fc receptor.It is a cluster of differentiation found on the surface of natural killer cells, neutrophil polymorphonuclear leukocytes, monocytes and macrophages.

Note: This product is for in vitro research use only