

Bcl-2-like protein 12 antibody

Catalog No: #22281

Orders: order@signalwayantibody.com

Support: tech@signalwayantibody.com

Description

Product Name	Bcl-2-like protein 12 antibody
Host Species	Rabbit
Clonality	Polyclonal
Purification	Purified by antigen-affinity chromatography.
Applications	WB IF
Species Reactivity	Hu
Immunogen Type	Peptide
Immunogen Description	Synthetic peptide contain a sequence corresponding to a region within amino acids 210 and 275 of human BCL2L12
Target Name	Bcl-2-like protein 12
Accession No.	Swiss-Prot:Q9HB09Gene ID:83596
Uniprot	Q9HB09
GeneID	83596;
Concentration	0.4mg/ml
Formulation	Supplied in 0.1M Tris-buffered saline with 10% Glycerol (pH7.0). 0.01% Thimerosal was added as a preservative.
Storage	Store at -20°C for long term preservation (recommended). Store at 4°C for short term use.

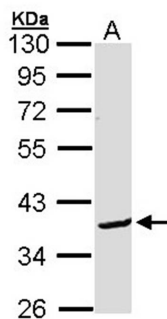
Application Details

Predicted MW: 37kd

Western blotting: 1:500-1:3000

Immunofluorescence: 1:100-1:200

Images



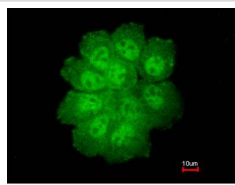
Sample (30 ug of whole cell lysate)

A: Molt-4

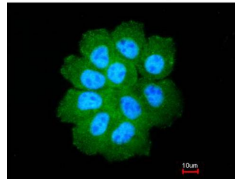
10% SDS PAGE

Primary antibody diluted at 1: 1000

Immunofluorescence analysis of paraformaldehyde-fixed A431, using Bcl-2-like protein 12 antibody at 1: 200 dilution.



Merged with DNA probe



Background

The protein encoded by this gene belongs to the BCL-2 protein family. BCL-2 family members form hetero- or homodimers and act as anti- or pro-apoptotic regulators that are involved in a wide variety of cellular activities. This protein contains a Bcl-2 homology domain 2 (BH2). The function of this gene has not yet been determined. Two alternatively spliced transcript variants of this gene encoding distinct isoforms have been reported. [provided by RefSeq]

Note: This product is for in vitro research use only