

Histone H1(mono-Methyl-Lys25) Rabbit Polyclonal Antibody

Catalog No: #HW062

Orders: order@signalwayantibody.comSupport: tech@signalwayantibody.com

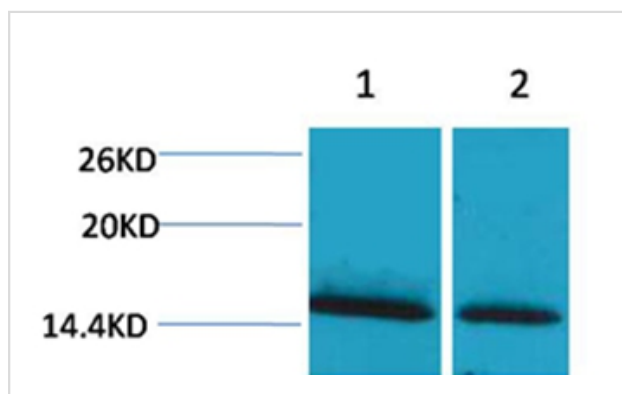
Description

Product Name	Histone H1(mono-Methyl-Lys25) Rabbit Polyclonal Antibody
Host Species	Rabbit
Clonality	Polyclonal
Purification	Affinity purification using immunogen.
Applications	WB
Species Reactivity	Hu Rt Ms
Specificity	The Histone H1(mono-methyl-Lys25) Rabbit Polyclonal Antibody detects endogenous Histone H1(mono-methyl-Lys25) protein.
Immunogen Type	peptide
Immunogen Description	A synthetic Mono-methylated peptide corresponding to residues surrounding Lys25 of human histone H1.
Target Name	Histone H1(mono-Methyl-Lys25)
Modification	Methyl
Other Names	H1 antibody; HIST1H1B antibody; Histone 1 antibody; Histone H1a antibody
Accession No.	Swiss-Prot#:P16403
Uniprot	P16403
GeneID	3006;
SDS-PAGE MW	17-25kd
Concentration	1.0mg/ml
Formulation	Rabbit Antiserum, containing 0.02% sodium azide as Preservative and 50% Glycerol.
Storage	Store at -20°C

Application Details

Western blotting: 1:500~1:1000

Images



Western blot analysis of 1) Hela, 2)3T3, using #HW062 diluted at 1:2,000

Background

Histone H1 is one of the five main histone protein families which are components of chromatin in eukaryotic cells. May play a key role in the control of gene expression during oogenesis and early embryogenesis, presumably through the perturbation of chromatin structure.

Note: This product is for in vitro research use only