

## Histone H3(Acetyl-Lys36) Rabbit Polyclonal Antibody

Catalog No: #HW078

Orders: [order@signalwayantibody.com](mailto:order@signalwayantibody.com)Support: [tech@signalwayantibody.com](mailto:tech@signalwayantibody.com)

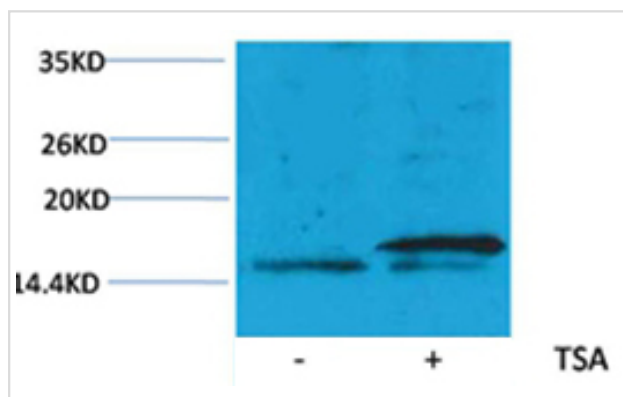
## Description

Product Name	Histone H3(Acetyl-Lys36) Rabbit Polyclonal Antibody
Host Species	Rabbit
Clonality	Polyclonal
Purification	Affinity purification using immunogen.
Applications	WB
Species Reactivity	Hu Rt Ms
Specificity	The Histone H3(Acetyl Lys36) Rabbit Polyclonal Antibody detects endogenous Histone H3 (Acetyl Lys36) protein.
Immunogen Type	peptide
Immunogen Description	A synthetic acetylated peptide corresponding to residues surrounding Lys36 of human histone H3.
Target Name	Histone H3(Acetyl-Lys36)
Modification	Acetyl
Other Names	H3 histone antibody; HIST1H3A antibody; Histone cluster 1; H3a antibody
Accession No.	Swiss-Prot#:P68431
Uniprot	P68431
GeneID	8350;8351;8352;8353;8354;8355;8356;8357;8358;8968;
SDS-PAGE MW	17kd
Concentration	1.0mg/ml
Formulation	Purified Rabbit IgG, 1mg/ml in PBS pH7.4, containing 0.02% sodium azide as Preservative and 50% Glycerol.
Storage	Store at -20°C

## Application Details

Western blotting: 1:200~1:500

## Images



Western blot analysis of extracts from Hela cells, untreated (-) or treated with TSA (1 $\mu$ M, 18 hr; +), using #HW078 diluted at 1:2,000.

## Background

---

Histone H3 is one of the five main histone proteins involved in the structure of chromatin in eukaryotic cells. Core component of nucleosome. Nucleosomes wrap and compact DNA into chromatin, limiting DNA accessibility to the cellular machineries which require DNA as a template. Histones thereby play a central role in transcription regulation, DNA repair, DNA replication and chromosomal stability.

---

Note: This product is for in vitro research use only