

Histone H2A(Acetyl-Lys9) Rabbit Polyclonal Antibody

Catalog No: #HW083

Orders: order@signalwayantibody.com

Support: tech@signalwayantibody.com

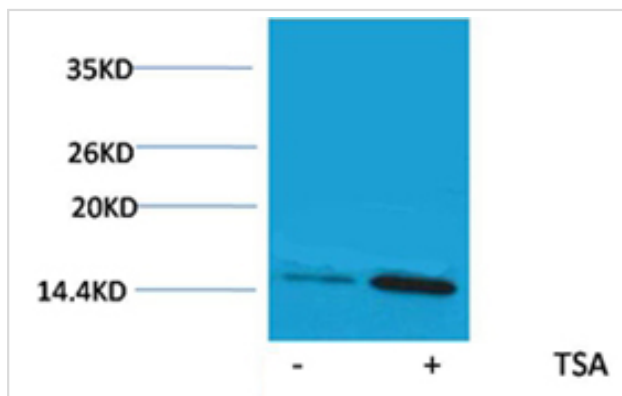
Description

Product Name	Histone H2A(Acetyl-Lys9) Rabbit Polyclonal Antibody
Host Species	Rabbit
Clonality	Polyclonal
Purification	Affinity purification using immunogen.
Applications	WB
Species Reactivity	Hu Rt Ms
Specificity	The Histone H2A(Acetyl Lys9) Rabbit Polyclonal Antibody detects endogenous Histone H2A(Acetyl Lys9) protein.
Immunogen Type	peptide
Immunogen Description	A synthetic acetylated peptide corresponding to residues surrounding Lys9 of human histone H2A.
Target Name	Histone H2A(Acetyl-Lys9)
Modification	Acetyl
Other Names	H2A 615 antibody; H2A GL101 antibody; H2A.1 antibody; HIST1H2AE antibody; MGC74460 antibody
Accession No.	Swiss-Prot#:P0C0S8
Uniprot	P0C0S8
GeneID	8329;8330;8332;8336;8969;
SDS-PAGE MW	14kd
Concentration	1.0mg/ml
Formulation	Rabbit Antiserum, containing 0.02% sodium azide as Preservative and 50% Glycerol.
Storage	Store at -20°C

Application Details

Western blotting: 1:1000~1:2000

Images



Western blot analysis of extracts from HeLa cells, untreated (-) or treated with TSA (1 μ M, 18 hr; +), using #HW083 diluted at 1:2,000.

Background

Histone H2A is one of the five main histone proteins involved in the structure of chromatin in eukaryotic cells. Core component of nucleosome. Nucleosomes wrap and compact DNA into chromatin, limiting DNA accessibility to the cellular machineries which require DNA as a template.

Note: This product is for in vitro research use only