

Pancreatic Amylase antibody

Catalog No: #22289

Orders: order@signalwayantibody.com

Support: tech@signalwayantibody.com

Description

| | |
|-----------------------|---|
| Product Name | Pancreatic Amylase antibody |
| Host Species | Rabbit |
| Clonality | Polyclonal |
| Purification | Purified by antigen-affinity chromatography. |
| Applications | WB IHC |
| Species Reactivity | Hu |
| Immunogen Type | Recombinant protein |
| Immunogen Description | Recombinant protein fragment contain a sequence corresponding to a region within amino acids 156 and 400 of human AMY2A |
| Target Name | Pancreatic Amylase |
| Accession No. | Swiss-Prot:P04746Gene ID:279 |
| Uniprot | P04746 |
| GeneID | 279; |
| Concentration | 1mg/ml |
| Formulation | Supplied in 0.1M Tris-buffered saline with 10% Glycerol (pH7.0). 0.01% Thimerosal was added as a preservative. |
| Storage | Store at -20°C for long term preservation (recommended). Store at 4°C for short term use. |

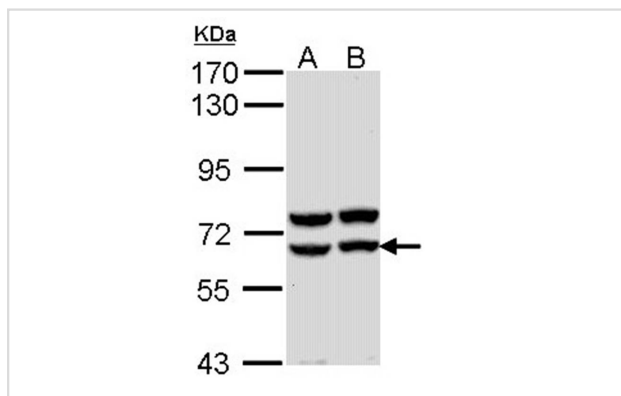
Application Details

Predicted MW: 58kd

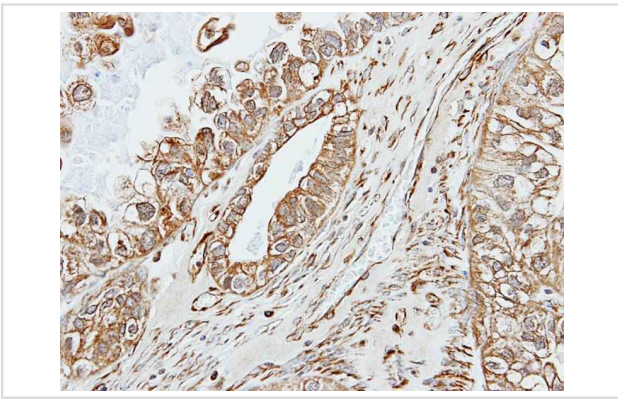
Western blotting: 1:500-1:3000

Immunohistochemistry: 1:50-1:500

Images



Sample (30 ug of whole cell lysate)
A: Molt-4
B: Raji
7.5% SDS PAGE
Primary antibody diluted at 1: 1000



Immunohistochemical analysis of paraffin-embedded OVCA, using alpha amylase 2A(pancreatic) antibody at 1: 500 dilution.

Background

Amylases are secreted proteins that hydrolyze 1,4-alpha-glucoside bonds in oligosaccharides and polysaccharides, and thus catalyze the first step in digestion of dietary starch and glycogen. The human genome has a cluster of several amylase genes that are expressed at high levels in either salivary gland or pancreas. This gene encodes an amylase isoenzyme produced by the pancreas. [provided by RefSeq]

Note: This product is for in vitro research use only