

## RFP-Tag Rabbit Polyclonal Antibody

Catalog No: #T522

Orders: [order@signalwayantibody.com](mailto:order@signalwayantibody.com)Support: [tech@signalwayantibody.com](mailto:tech@signalwayantibody.com)

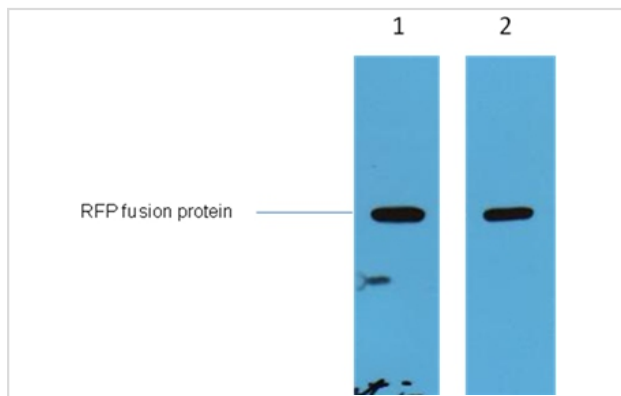
## Description

Product Name	RFP-Tag Rabbit Polyclonal Antibody
Host Species	Rabbit
Clonality	Polyclonal
Purification	Affinity purification using immunogen.
Applications	WB
Species Reactivity	Hu Ms Rt
Specificity	The RFP tag antibody can recognize RFP tag fusion proteins.
Target Name	RFP-Tag
Concentration	1.0mg/ml
Formulation	Rabbit IgG in phosphate buffered saline (without Mg <sup>2+</sup> and Ca <sup>2+</sup> ), pH 7.4, 150mM NaCl, 0.02% sodium azide and 50% glycerol.
Storage	Store at -20°C

## Application Details

Western blotting: 1:5000~1:10000

## Images



2ug RFP fusion protein+ Primary antibody #T522 dilution at 1:5,000 (lane 1) and 1:10,000 (lane 2).

## Background

The red fluorescent protein cloned from *Discosoma* coral (DsRed or drFP583) holds great promise for biotechnology and cell biology as a spectrally distinct companion or substitute for the green fluorescent protein (GFP) from the *Aequorea* jellyfish.

Note: This product is for in vitro research use only