

PCNA Mouse Monoclonal Antibody

Catalog No: #37978

Orders: order@signalwayantibody.comSupport: tech@signalwayantibody.com

Description

Product Name	PCNA Mouse Monoclonal Antibody
Host Species	Mouse
Clonality	Monoclonal
Purification	Affinity purification using immunogen.
Applications	WB,IHC,IF
Species Reactivity	Hu Ms
Specificity	Antibody can detect endogenous?PCNA protein.
Target Name	PCNA
Accession No.	Swiss-Prot:P12004Gene ID:5111
Uniprot	P12004
GeneID	5111;
SDS-PAGE MW	36kd
Concentration	1.0mg/ml
Formulation	Mouse IgG1 in phosphate buffered saline (without Mg ²⁺ and Ca ²⁺), pH 7.4, 150mM NaCl, 0.02% sodium azide and 50% glycerol.
Storage	Store at -20°C

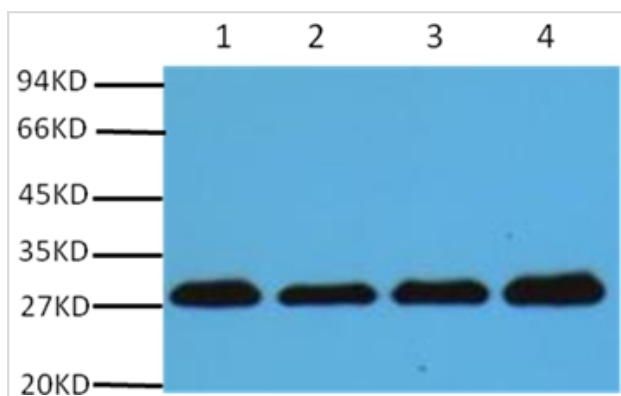
Application Details

WB dilution: 1:5000

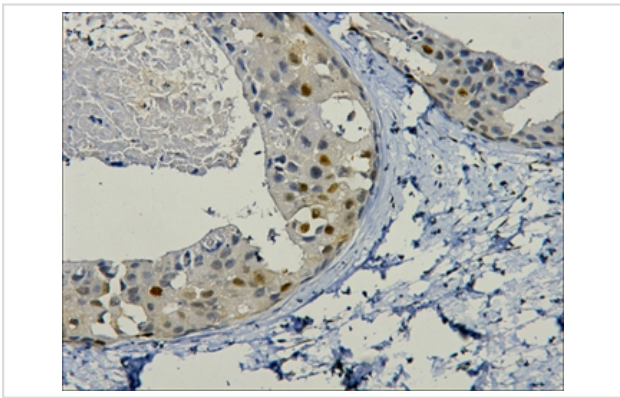
IHC dilution: 1:200

IF dilution:1:200

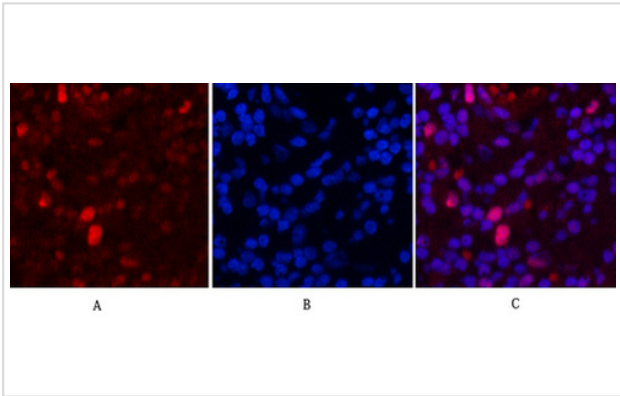
Images



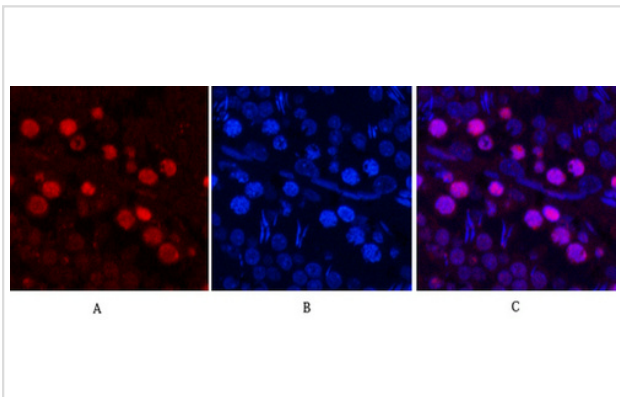
Western blot analysis of HeLa (lane 1), Rat brain (lane 2), NIH 3T3 (lane 3), 293T (lane 4), using #37978 diluted at 1:5000.



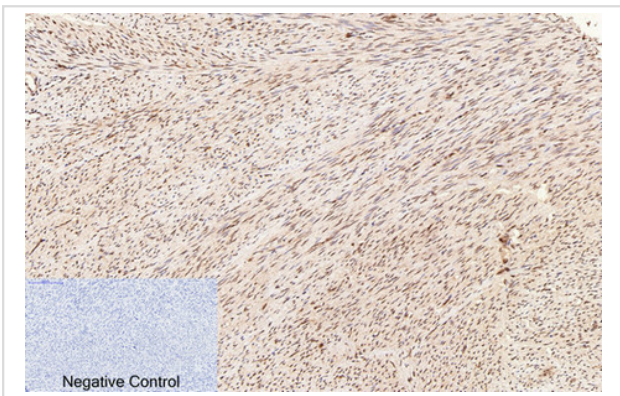
IHC staining of paraffin- embedded Human breast cancer tissue with PCNA mouse mAb (12D10) diluted at 1:200.



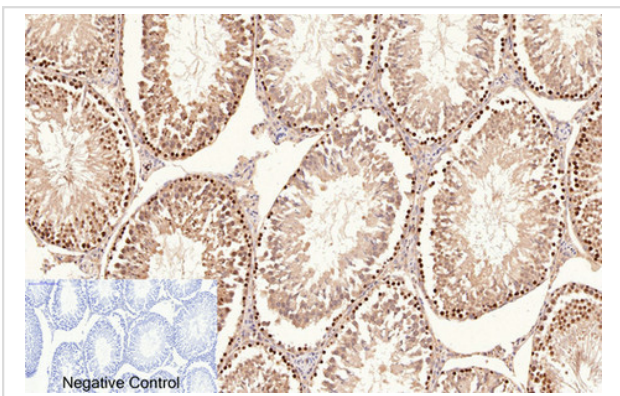
Immunofluorescence analysis of Human-lung-cancer tissue. 1,PCNA Monoclonal Antibody(12D10)(red) was diluted at 1:200(4C,overnight). 2, Cy3 labeled Secondary antibody was diluted at 1:300(room temperature, 50min).3, Picture B: DAPI(blue) 10min. Picture A:Target. Picture B: DAPI. Picture C: merge of A+B



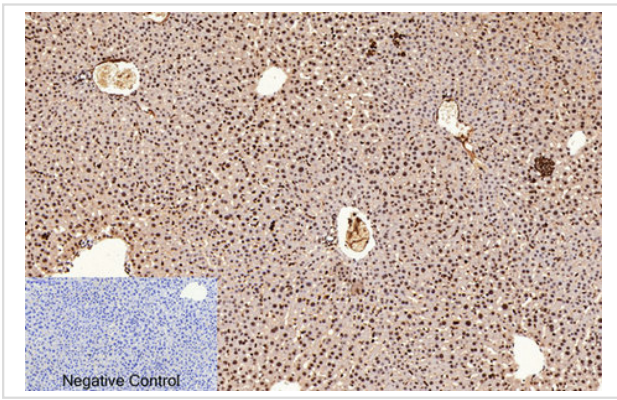
Immunofluorescence analysis of Rat-testis tissue. 1,PCNA Monoclonal Antibody(12D10)(red) was diluted at 1:200(4C,overnight). 2, Cy3 labeled Secondary antibody was diluted at 1:300(room temperature, 50min).3, Picture B: DAPI(blue) 10min. Picture A:Target. Picture B: DAPI. Picture C: merge of A+B



Immunohistochemical analysis of paraffin-embedded Human-uterus tissue. 1,PCNA Monoclonal Antibody(12D10) was diluted at 1:200(4C,overnight). 2, Sodium citrate pH 6.0 was used for antibody retrieval(>98C,20min). 3,Secondary antibody was diluted at 1:200(room temperature, 30min). Negative control was used by secondary antibody only.



Immunohistochemical analysis of paraffin-embedded Rat-testis tissue. 1,PCNA Monoclonal Antibody(12D10) was diluted at 1:200(4C,overnight). 2, Sodium citrate pH 6.0 was used for antibody retrieval(>98C,20min). 3,Secondary antibody was diluted at 1:200(room temperature, 30min). Negative control was used by secondary antibody only.



Immunohistochemical analysis of paraffin-embedded Mouse-liver tissue. 1,PCNA Monoclonal Antibody(12D10) was diluted at 1:200(4C,overnight). 2, Sodium citrate pH 6.0 was used for antibody retrieval(>98C,20min). 3,Secondary antibody was diluted at 1:200(room tempeRature, 30min). Negative control was used by secondary antibody only.

Background

PCNA is a marker for cells in early G1 phase and S phase of the cell cycle. It is found in the nucleus and is a cofactor of DNA polymerase delta. PCNA acts as a homotrimer and helps increase the processivity of leading strand synthesis during DNA replication. In response to DNA damage, PCNA is ubiquitinated and is involved in the RAD6 dependent DNA repair pathway. Two transcript variants encoding the same protein have been found for PCNA. Pseudogenes of this gene have been described on chromosome 4 and on the X chromosome.

Note: This product is for in vitro research use only