

β I tubulin Mouse Monoclonal Antibody

Catalog No: #37983

Orders: order@signalwayantibody.comSupport: tech@signalwayantibody.com

Description

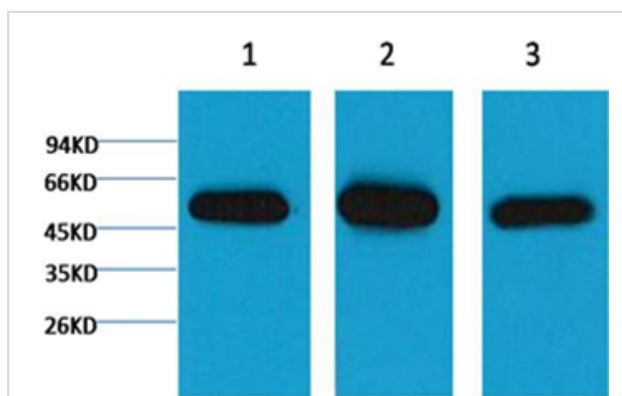
Product Name	β I tubulin Mouse Monoclonal Antibody
Host Species	Mouse
Clonality	Monoclonal
Purification	Affinity purification using immunogen.
Applications	WB,IHC,IF
Species Reactivity	Hu Rt Ms
Specificity	The β I tubulin antibody can recognize endogenous β I tubulin proteins.
Target Name	β I tubulin
Accession No.	Swiss-Prot:Q9H4B7 Gene ID:81027
Uniprot	Q9H4B7
GeneID	81027;
SDS-PAGE MW	55kd
Concentration	1.0mg/ml
Formulation	Mouse IgG1 in phosphate buffered saline (without Mg ²⁺ and Ca ²⁺), pH 7.4, 150mM NaCl, 0.02% sodium azide and 50% glycerol.
Storage	Store at -20°C

Application Details

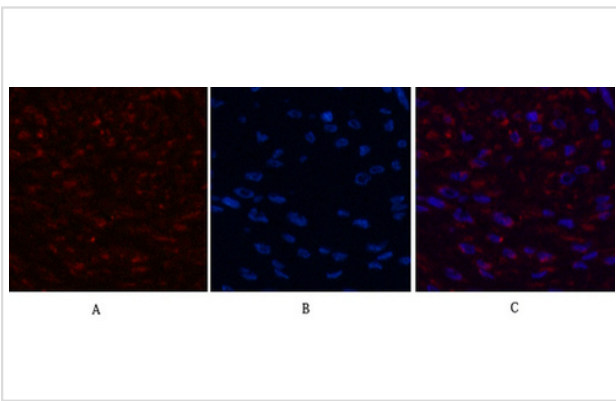
WB dilution: 1:5000~1:10000

IHC dilution:1:50-300IF dilution:1:200

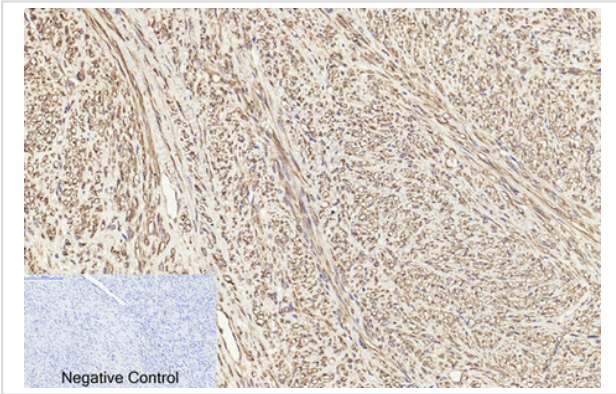
Images



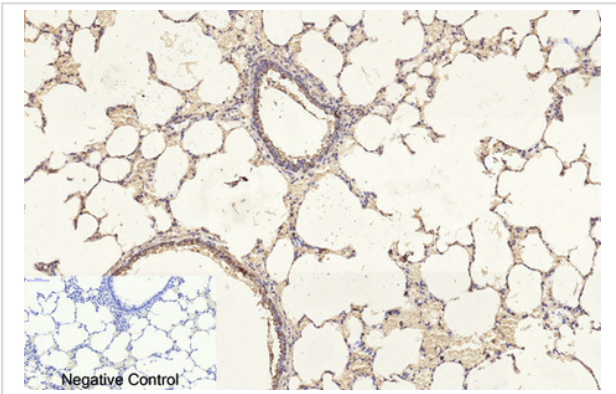
Western blot analysis of 1) Hela, 2) Mouse Brain Tissue, 3) Rat Brain Tissue, using #37983 diluted at 1:5,000.



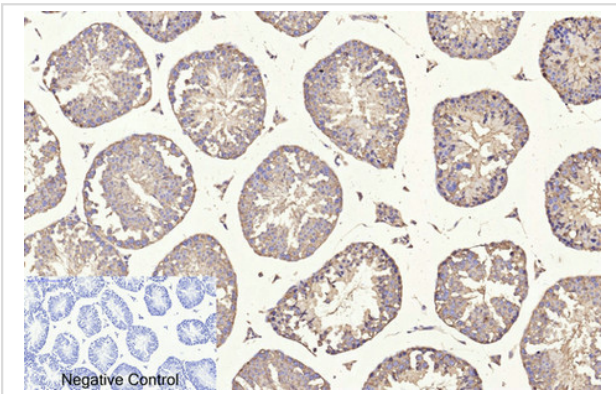
Immunofluorescence analysis of Human-breast-cancer tissue. 1, I tubulin Monoclonal Antibody(3F7)(red) was diluted at 1:200(4C,overnight). 2, Cy3 labeled Secondary antibody was diluted at 1:300(room temperature, 50min).3, Picture B: DAPI(blue) 10min. Picture A:Target. Picture B: DAPI. Picture C: merge of A+B



Immunohistochemical analysis of paraffin-embedded Human-uterus-cancer tissue. 1, I tubulin Monoclonal Antibody(3F7) was diluted at 1:200(4C,overnight). 2, Sodium citrate pH 6.0 was used for antibody retrieval(>98C,20min). 3,Secondary antibody was diluted at 1:200(room temperature, 30min). Negative control was used by secondary antibody only.



Immunohistochemical analysis of paraffin-embedded Rat-lung tissue. 1, I tubulin Monoclonal Antibody(3F7) was diluted at 1:200(4C,overnight). 2, Sodium citrate pH 6.0 was used for antibody retrieval(>98C,20min). 3,Secondary antibody was diluted at 1:200(room temperature, 30min). Negative control was used by secondary antibody only.



Immunohistochemical analysis of paraffin-embedded Mouse-testis tissue. 1, I tubulin Monoclonal Antibody(3F7) was diluted at 1:200(4C,overnight). 2, Sodium citrate pH 6.0 was used for antibody retrieval(>98C,20min). 3,Secondary antibody was diluted at 1:200(room temperature, 30min). Negative control was used by secondary antibody only.

Background

Tubulin is one of several members of a small family of globular proteins. The tubulin superfamily includes five distinct families, the alpha-, beta-, gamma-, delta-, and epsilon-tubulins. The most common members of the tubulin family are α -tubulin and β -tubulin, the proteins that make up microtubules. Each has a molecular weight of approximately 55 KD. Microtubules are assembled from dimers of α - and β -tubulin.

Note: This product is for in vitro research use only