

GAPDH Rabbit Polyclonal Antibody

Catalog No: #37985

Orders: order@signalwayantibody.comSupport: tech@signalwayantibody.com

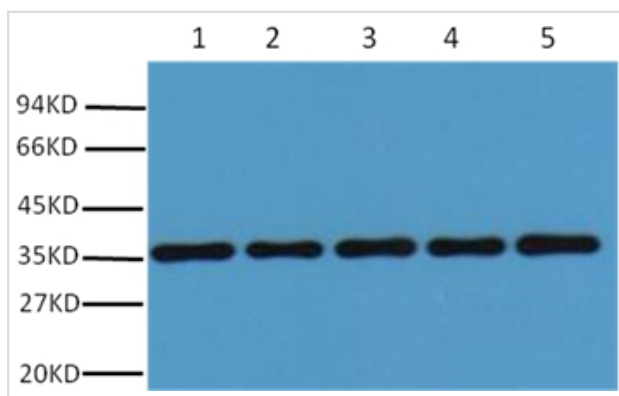
Description

| | |
|--------------------|---|
| Product Name | GAPDH Rabbit Polyclonal Antibody |
| Host Species | Rabbit |
| Clonality | Polyclonal |
| Purification | Affinity purification using immunogen. |
| Applications | WB,IHC |
| Species Reactivity | Hu Rt Ms Mk Chk Hm Sh Xenopus |
| Specificity | Antibody detects endogenous GAPDH protein. |
| Target Name | GAPDH |
| Other Names | G3PD; GAPD; MGC88685 |
| Accession No. | Swiss-Prot#:P04406 |
| Uniprot | P04406 |
| GeneID | 2597; |
| SDS-PAGE MW | 37kd |
| Concentration | 1.0mg/ml |
| Formulation | IgG in phosphate buffered saline (without Mg ²⁺ and Ca ²⁺), pH 7.4, 150mM NaCl, 0.02% sodium azide and 50% glycerol. |
| Storage | Store at -20°C |

Application Details

Western blotting: 1:5000~1:20000

Images



Western blot analysis of 293T (1), Rat brain (2), NIH 3T3(3), Sheep Muscle(4),Rabbit testis(5), using #37985 diluted at 1:20,000.

Background

Glyceraldehyde 3 phosphate dehydrogenase (GAPDH) is well known as one of the key enzymes involved in glycolysis. GAPDH is constitutively expressed in almost all tissues at high levels, therefore antibodies against GAPDH are useful as loading controls for Western Blotting. Some physiological factors, such as hypoxia and diabetes, increase GAPDH expression in certain cell types.

Note: This product is for in vitro research use only