

## Histone H3 Mouse Monoclonal Antibody

Catalog No: #37988

Orders: [order@signalwayantibody.com](mailto:order@signalwayantibody.com)Support: [tech@signalwayantibody.com](mailto:tech@signalwayantibody.com)

## Description

Product Name	Histone H3 Mouse Monoclonal Antibody
Host Species	Mouse
Clonality	Monoclonal
Purification	Affinity purification using immunogen.
Applications	WB,IHC,IF
Species Reactivity	Hu Rt Ms
Specificity	The Histone H3 antibody can detects endogenous Histone H3 protein.
Target Name	Histone H3
Other Names	H3/A; H3FA;H3FB; H3FC
Accession No.	Swiss-Prot#:P68431
Uniprot	P68431
GeneID	8350;8351;8352;8353;8354;8355;8356;8357;8358;8968;
SDS-PAGE MW	17kd
Concentration	1.0mg/ml
Formulation	Mouse IgG1 in phosphate buffered saline (without Mg2+ and Ca2+), pH 7.4, 150mM NaCl, 0.02% sodium azide and 50% glycerol.
Storage	Store at -20°C

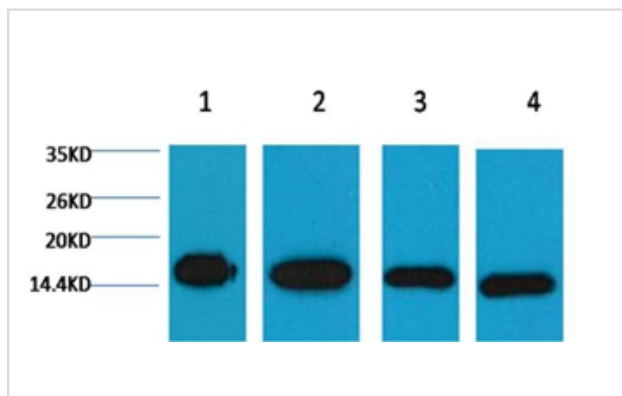
## Application Details

WB dilution: 1:2000~1:5000

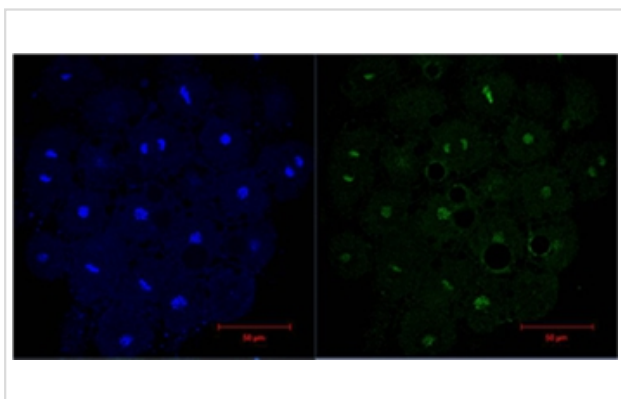
IF dilution: 1:100-500

IP dilution: 1:200IHC dilution:1:50-300

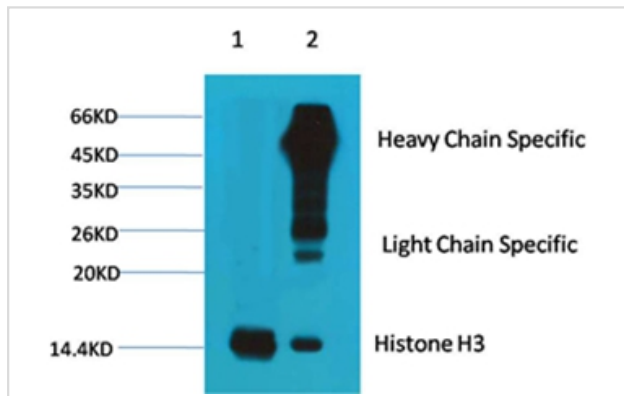
## Images



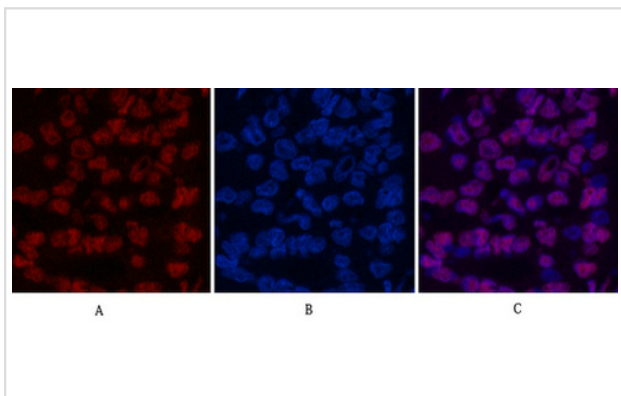
Western blot analysis of 1) Hela, 2) Raw, 3) Mouse Brain Tissue, 4) Rat Brain Tissue, using #37988 diluted at 1:5,000.



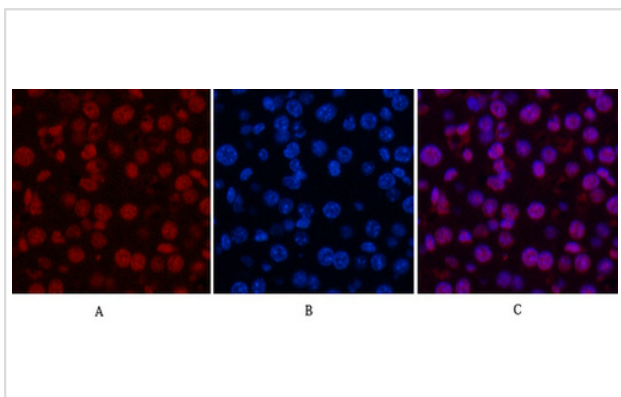
IF analysis of HeLa with DAPI (Left) and #37988(Right) diluted at 1:200.



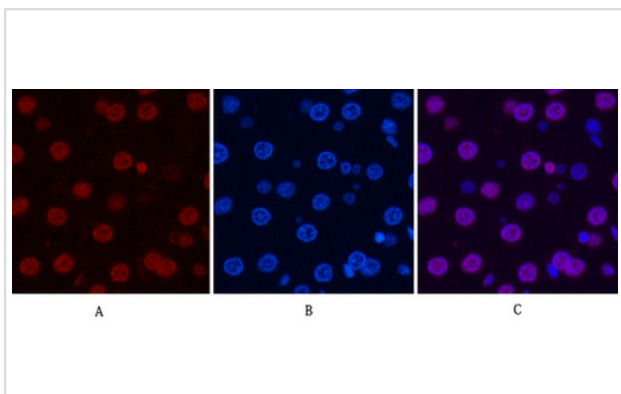
1B'Input: HeLa Cell Lysate  
 2B'IP product: IP dilute 1:200  
 Western blot analysis: primary antibody : #37988 1:2,000  
 Secondary antibody: Goat anti-Mouse IgG(H+L) 1:10,000.



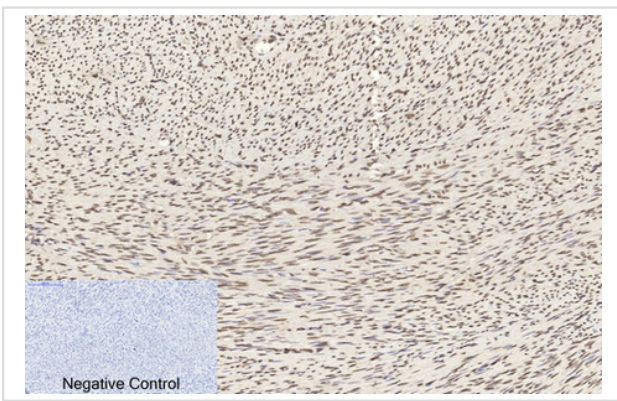
Immunofluorescence analysis of Human-liver-cancer tissue. 1,Histone H3 Monoclonal Antibody(1G1)(red) was diluted at 1:200(4C,overnight). 2, Cy3 labeled Secondary antibody was diluted at 1:300(room temperature, 50min).3, Picture B: DAPI(blue) 10min. Picture A:Target. Picture B: DAPI. Picture C: merge of A+B



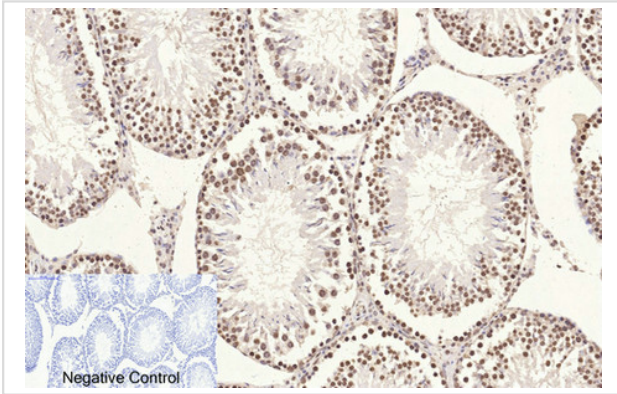
Immunofluorescence analysis of Mouse-liver tissue. 1,Histone H3 Monoclonal Antibody(1G1)(red) was diluted at 1:200(4C,overnight). 2, Cy3 labeled Secondary antibody was diluted at 1:300(room temperature, 50min).3, Picture B: DAPI(blue) 10min. Picture A:Target. Picture B: DAPI. Picture C: merge of A+B



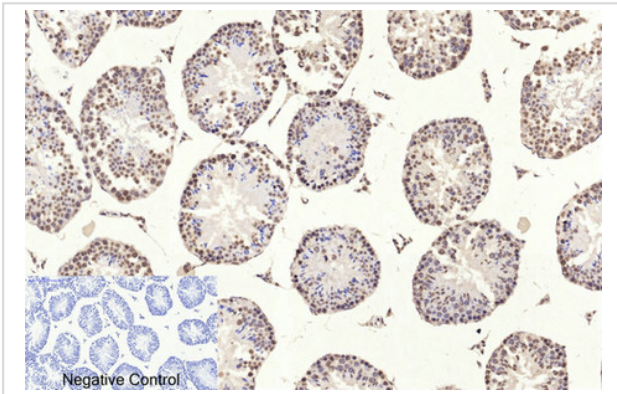
Immunofluorescence analysis of Rat-liver tissue. 1,Histone H3 Monoclonal Antibody(1G1)(red) was diluted at 1:200(4C,overnight). 2, Cy3 labeled Secondary antibody was diluted at 1:300(room temperature, 50min).3, Picture B: DAPI(blue) 10min. Picture A:Target. Picture B: DAPI. Picture C: merge of A+B



Immunohistochemical analysis of paraffin-embedded Human-uterus tissue. 1, Histone H3 Monoclonal Antibody(1G1) was diluted at 1:200(4C, overnight). 2, Sodium citrate pH 6.0 was used for antibody retrieval(>98C, 20min). 3, Secondary antibody was diluted at 1:200(room temperature, 30min). Negative control was used by secondary antibody only.



Immunohistochemical analysis of paraffin-embedded Rat-testis tissue. 1, Histone H3 Monoclonal Antibody(1G1) was diluted at 1:200(4C, overnight). 2, Sodium citrate pH 6.0 was used for antibody retrieval(>98C, 20min). 3, Secondary antibody was diluted at 1:200(room temperature, 30min). Negative control was used by secondary antibody only.



Immunohistochemical analysis of paraffin-embedded Mouse-testis tissue. 1, Histone H3 Monoclonal Antibody(1G1) was diluted at 1:200(4C, overnight). 2, Sodium citrate pH 6.0 was used for antibody retrieval(>98C, 20min). 3, Secondary antibody was diluted at 1:200(room temperature, 30min). Negative control was used by secondary antibody only.

## Background

Histone H3 is one of the five main histone proteins involved in the structure of chromatin in eukaryotic cells. Core component of nucleosome. Nucleosomes wrap and compact DNA into chromatin, limiting DNA accessibility to the cellular machineries which require DNA as a template. Histones thereby play a central role in transcription regulation, DNA repair, DNA replication and chromosomal stability.

Note: This product is for in vitro research use only