

β -tubulin Mouse Monoclonal Antibody(Zebrafish Specific)

Catalog No: #38058

Orders: order@signalwayantibody.comSupport: tech@signalwayantibody.com

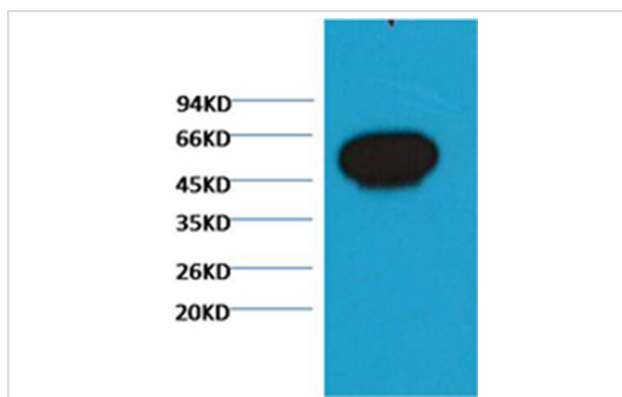
Description

Product Name	β -tubulin Mouse Monoclonal Antibody(Zebrafish Specific)
Host Species	Mouse
Clonality	Monoclonal
Purification	Affinity purification using immunogen.
Applications	WB
Species Reactivity	Zebrafish
Specificity	The β -tubulin antibody can detects Zebrafish endogenous β -tubulin protein.
Target Name	β -tubulin
Other Names	beta 5-tubulin; beta 1b tubulin; beta-4 tubulin; M40; MGC117247; MGC16435; OK/SW-cl.56; TBB5; TUBB; TUBB1; TUBB5
Accession No.	Swiss-Prot#:P07437
Uniprot	P07437
GeneID	203068;
SDS-PAGE MW	55kd
Concentration	1.0mg/ml
Formulation	Mouse IgG1 in phosphate buffered saline (without Mg ²⁺ and Ca ²⁺), pH 7.4, 150mM NaCl, 0.02% sodium azide and 50% glycerol.
Storage	Store at -20°C

Application Details

Western blotting: 1:5000~1:20000

Images



Western blot analysis of Zebrafish skeletal muscle, using #38058 diluted at 1:5,000.

Background

Microtubules are constituent parts of the mitotic apparatus, cilia, flagella, and elements of the cytoskeleton. They consist principally of 2 soluble

proteins, alpha- and beta-tubulin, each of about 55,000 Da. Antibodies against beta Tubulin are useful as loading controls for Western Blotting. However it should be noted that levels of β -Tubulin may not be stable in certain cells. For example, expression of β -Tubulin in adipose tissue is very low and therefore β -Tubulin should not be used as loading control for these tissues.

Note: This product is for in vitro research use only