

α tubulin Mouse Monoclonal Antibody(Zebrafish Specific)

Catalog No: #38059

Orders: order@signalwayantibody.comSupport: tech@signalwayantibody.com

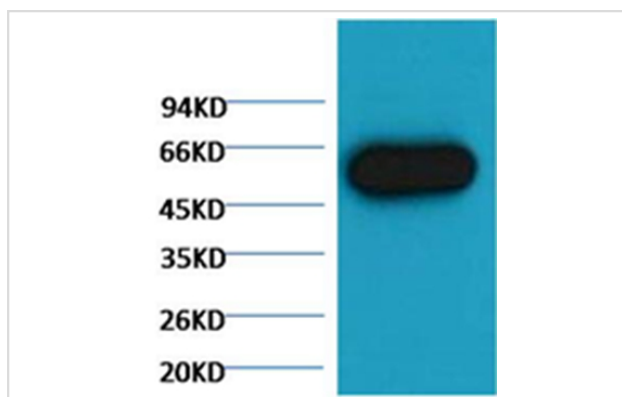
Description

Product Name	α tubulin Mouse Monoclonal Antibody(Zebrafish Specific)
Host Species	Mouse
Clonality	Monoclonal
Purification	Affinity purification using immunogen.
Applications	WB
Species Reactivity	Zebrafish
Specificity	The α -tubulin antibody can detects Zebrafish endogenous α -tubulin protein..
Target Name	α tubulin
Other Names	alpha-tubulin N-acetyltransferase; ATAT1; C6orf134; CF134; chromosome 6 open reading frame 134; DKFZp547J097; FLJ13158; LOC79969; MEC-17; MEC17; Nbla00487
Accession No.	Swiss-Prot#:Q71U36
Uniprot	Q71U36
GeneID	7846;
SDS-PAGE MW	52kd
Concentration	1.0mg/ml
Formulation	Mouse IgG1 in phosphate buffered saline (without Mg ²⁺ and Ca ²⁺), pH 7.4, 150mM NaCl, 0.02% sodium azide and 50% glycerol.
Storage	Store at -20°C

Application Details

Western blotting: 1:5000~1:10000

Images



Western blot analysis of Zebrafish skeletal muscle, using #38059 diluted at 1:5,000.

Background

Tubulin is one of several members of a small family of globular proteins. The tubulin superfamily includes five distinct families, the alpha-, beta-,

gamma-, delta-, and epsilon-tubulins. The most common members of the tubulin family are α -tubulin and β -tubulin, the proteins that make up microtubules. Each has a molecular weight of approximately 55 KD. Microtubules are assembled from dimers of α - and β -tubulin.

Note: This product is for in vitro research use only