

β -tubulin Mouse Monoclonal Antibody

Catalog No: #38071

Orders: order@signalwayantibody.comSupport: tech@signalwayantibody.com

Description

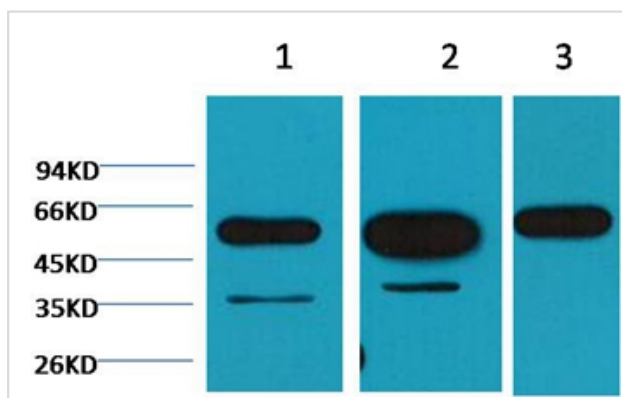
| | |
|--------------------|--|
| Product Name | β -tubulin Mouse Monoclonal Antibody |
| Host Species | Mouse |
| Clonality | Monoclonal |
| Purification | Affinity purification using immunogen. |
| Applications | WB,IF |
| Species Reactivity | Hu Rt Ms |
| Specificity | The β -tubulin antibody can detect endogenous β -tubulin protein. |
| Target Name | β -tubulin |
| Other Names | beta 5-tubulin; beta 1b tubulin; beta-4 tubulin; M40; MGC117247; MGC16435; OK/SW-cl.56; TBB5; TUBB; TUBB1; TUBB5 |
| Accession No. | Swiss-Prot#:P07437 |
| Uniprot | P07437 |
| GeneID | 203068; |
| SDS-PAGE MW | 55kd |
| Concentration | 1.0mg/ml |
| Formulation | Mouse IgG1 in phosphate buffered saline (without Mg ²⁺ and Ca ²⁺), pH 7.4, 150mM NaCl, 0.02% sodium azide and 50% glycerol. |
| Storage | Store at -20°C |

Application Details

WB dilution: 1:5000~1:10000

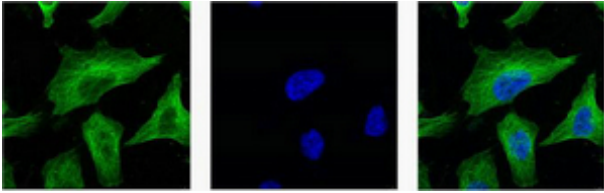
IF dilution:1:200

Images



Western blot analysis of 1) Hela, 2) Mouse Brain tissue, 3) Rat Brain tissue, using #38071 diluted at 1:5,000.

IF analysis of Hela with antibody (Left) and DAPI (Right) diluted at 1:100.



Background

Microtubules are constituent parts of the mitotic apparatus, cilia, flagella, and elements of the cytoskeleton. They consist principally of 2 soluble proteins, alpha- and beta-tubulin, each of about 55,000 Da. Antibodies against beta Tubulin are useful as loading controls for Western Blotting. However it should be noted that levels of β -Tubulin may not be stable in certain cells. For example, expression of β -Tubulin in adipose tissue is very low and therefore β -Tubulin should not be used as loading control for these tissues.

Note: This product is for in vitro research use only