

# $\beta$ -tubulin Mouse Monoclonal Antibody

Catalog No: #38075

Orders: [order@signalwayantibody.com](mailto:order@signalwayantibody.com)Support: [tech@signalwayantibody.com](mailto:tech@signalwayantibody.com)

## Description

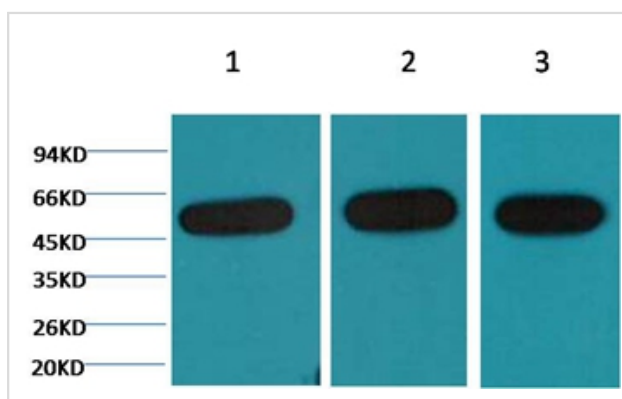
Product Name	$\beta$ -tubulin Mouse Monoclonal Antibody
Host Species	Mouse
Clonality	Monoclonal
Clone No.	5G3
Purification	Affinity purification using immunogen.
Applications	WB,IHC
Species Reactivity	Hu Rt Ms Mk Dg Chk Hm Rb Sh
Specificity	Antibody detects endogenous $\beta$ -tubulin protein.
Target Name	$\beta$ -tubulin
Other Names	beta 5-tubulin; beta 1b tubulin; beta-4 tubulin; M40; MGC117247; MGC16435; OK/SW-cl.56; TBB5; TUBB; TUBB1; TUBB5
Accession No.	Swiss-Prot#:P07437
Uniprot	P07437
GeneID	203068;
SDS-PAGE MW	55kd
Concentration	1.0mg/ml
Formulation	Mouse IgG1 in phosphate buffered saline (without Mg <sup>2+</sup> and Ca <sup>2+</sup> ), pH 7.4, 150mM NaCl, 0.02% sodium azide and 50% glycerol.
Storage	Store at -20°C

## Application Details

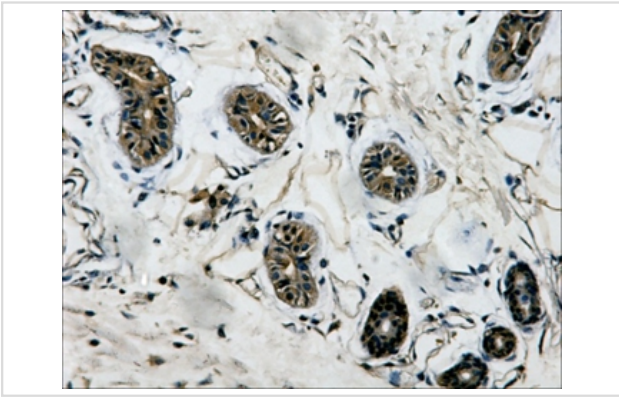
Western blotting: 1:5000~1:10000

Immunohistochemistry: 1:200

## Images



Western blot analysis of 1) Hela ,2) Mouse Kidney tissue, 3) Rat Heart tissue, using #38075 diluted at 1:5,000.



IHC staining of Human colon tissue with  $\beta$ -tubulin mouse mAb(5G3) diluted at 1:200.

## Background

Microtubules are constituent parts of the mitotic apparatus, cilia, flagella, and elements of the cytoskeleton. They consist principally of 2 soluble proteins, alpha- and beta-tubulin, each of about 55,000 Da. Antibodies against beta Tubulin are useful as loading controls for Western Blotting. However it should be noted that levels of  $\beta$ -Tubulin may not be stable in certain cells. For example, expression of  $\beta$ -Tubulin in adipose tissue is very low and therefore  $\beta$ -Tubulin should not be used as loading control for these tissues.

Note: This product is for in vitro research use only