

# $\beta$ II tubulin Mouse Monoclonal Antibody (Rodent Preferred)

Catalog No: #38092

Orders: [order@signalwayantibody.com](mailto:order@signalwayantibody.com)Support: [tech@signalwayantibody.com](mailto:tech@signalwayantibody.com)

## Description

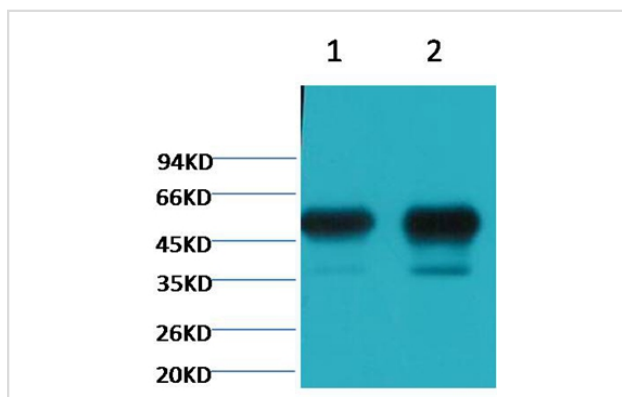
Product Name	$\beta$ II tubulin Mouse Monoclonal Antibody (Rodent Preferred)
Host Species	Mouse
Clonality	Monoclonal
Purification	Affinity purification using immunogen.
Applications	WB, IHC
Species Reactivity	Rt Ms
Specificity	The $\beta$ II tubulin Mouse Monoclonal Antibody detects endogenous $\beta$ II tubulin protein.
Target Name	$\beta$ II tubulin
Accession No.	Swiss-Prot:Q13885 Gene ID:7280
Uniprot	Q13885
GeneID	7280;
SDS-PAGE MW	50kd
Concentration	1.0mg/ml
Formulation	Mouse IgG1 in phosphate buffered saline (without Mg <sup>2+</sup> and Ca <sup>2+</sup> ), pH 7.4, 150mM NaCl, 0.02% sodium azide and 50% glycerol.
Storage	Store at -20°C

## Application Details

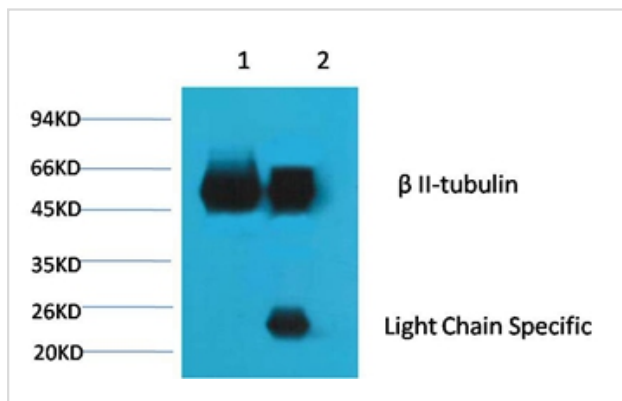
WB dilution: 1:50000~1:100000

IHC dilution:1:50-300IP dilution: 1:200

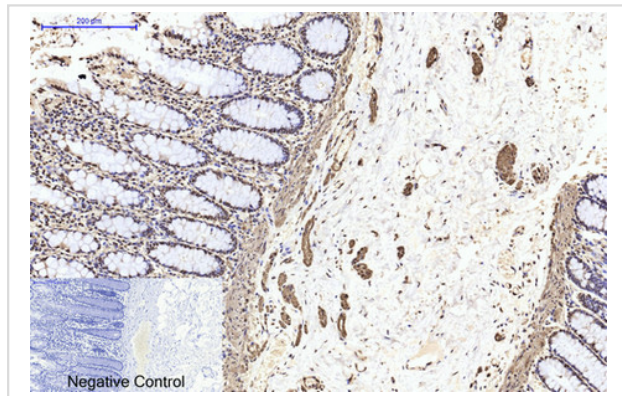
## Images



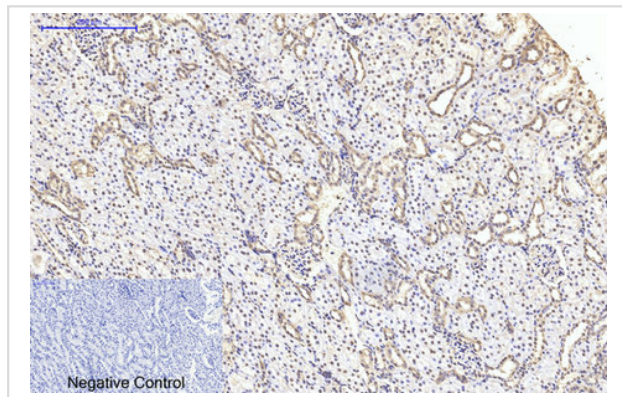
Western blot analysis of 1) Mouse Brain tissue, 2) Rat Brain tissue, using #38092 diluted at 1:100,000.



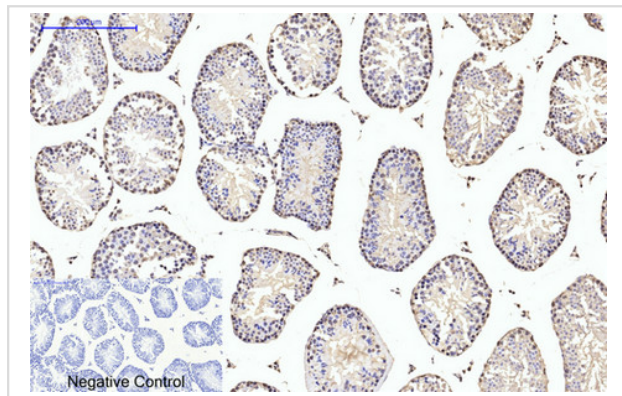
1B'Input: Mouse Brain Tissue Lysate  
 2B'IP product: IP dilute 1:200  
 Western blot analysis: primary antibody : #38092 1:10,000  
 Secondary antibody: Goat anti-Mouse IgG, Light chain specific, 1:5,000



Immunohistochemical analysis of paraffin-embedded Human-colon tissue. 1, II tubulin Monoclonal Antibody(Mix) was diluted at 1:200(4C,overnight). 2, Sodium citrate pH 6.0 was used for antibody retrieval(>98C,20min). 3,Secondary antibody was diluted at 1:200(room tempeRature, 30min). Negative control was used by secondary antibody only.



Immunohistochemical analysis of paraffin-embedded Rat-kidney tissue. 1, II tubulin Monoclonal Antibody(Mix) was diluted at 1:200(4C,overnight). 2, Sodium citrate pH 6.0 was used for antibody retrieval(>98C,20min). 3,Secondary antibody was diluted at 1:200(room tempeRature, 30min). Negative control was used by secondary antibody only.



Immunohistochemical analysis of paraffin-embedded Mouse-testis tissue. 1, II tubulin Monoclonal Antibody(Mix) was diluted at 1:200(4C,overnight). 2, Sodium citrate pH 6.0 was used for antibody retrieval(>98C,20min). 3,Secondary antibody was diluted at 1:200(room tempeRature, 30min). Negative control was used by secondary antibody only.

## Background

Tubulin is the major constituent of microtubules. It exists as a heterodimer consisting of an alpha and a beta subunit. Class II beta tubulin is the major form of tubulin beta in neurons, although it is not neuronal specific. It is found in many other tissues including lung tissue and Schwann cells.

Note: This product is for in vitro research use only