

HBP1 (Phospho-Ser402) Antibody

Catalog No: #12107

Package Size: #12107-1 50ul #12107-2 100ul

Orders: order@signalwayantibody.com

Support: tech@signalwayantibody.com

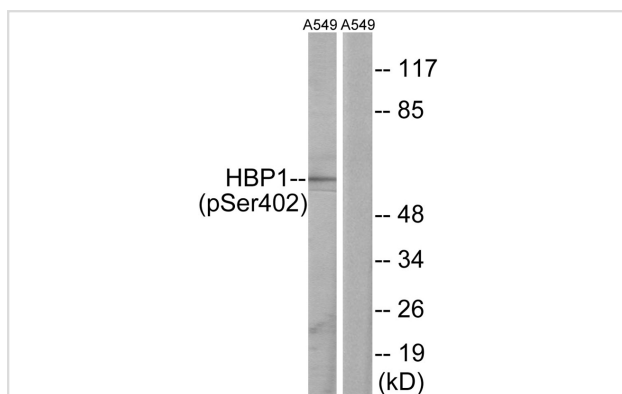
Description

Product Name	HBP1 (Phospho-Ser402) Antibody
Host Species	Rabbit
Clonality	Polyclonal
Purification	Antibodies were produced by immunizing rabbits with synthetic phosphopeptide and KLH conjugates. Antibodies were purified by affinity-chromatography using epitope-specific phosphopeptide. Non-phospho specific antibodies were removed by chromatography using non-phosphopeptide.
Applications	WB
Species Reactivity	Hu Ms
Specificity	The antibody detects endogenous levels of HBP1 only when phosphorylated at serine 402.
Immunogen Type	peptide
Immunogen Description	Peptide sequence around phosphorylation site of serine 402 (C-G-S(p)-P-G) derived from Human HBP1.
Target Name	HBP1
Modification	Phospho
Other Names	HMG box containing protein 1
Accession No.	Swiss-Prot#:O60381;NCBI Gene#:26959
Uniprot	O60381
GeneID	26959;
SDS-PAGE MW	58kd
Concentration	1.0mg/ml
Formulation	Rabbit IgG in phosphate buffered saline (without Mg ²⁺ and Ca ²⁺), pH 7.4, 150mM NaCl, 0.02% sodium azide and 50% glycerol.
Storage	Store at -20°C

Application Details

Western blotting: 1:500~1:3000

Images



Western blot analysis of extracts from A549 cells, treated with PMA (125ng/ml, 30mins), using HBP1 (Phospho-Ser402) antibody #12107. The lane on the right is treated with the synthesized peptide.

Background

Transcriptional repressor that binds to the promoter region of target genes. Plays a role in the regulation of the cell cycle and of the Wnt pathway. Binds preferentially to the sequence 5'-TTCATTCATTCA-3'. Binding to the H1F0 promoter is enhanced by interaction with RB1. Disrupts the interaction between DNA and TCF4.

Note: This product is for in vitro research use only