

PLK1 (Phospho-Ser137) Antibody

Catalog No: #12118

Package Size: #12118-1 50ul #12118-2 100ul

Orders: order@signalwayantibody.com

Support: tech@signalwayantibody.com

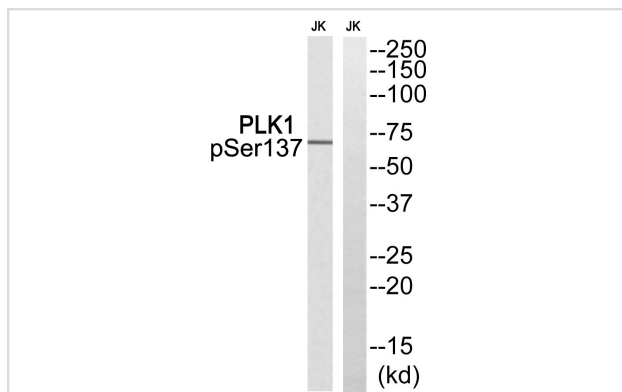
Description

Product Name	PLK1 (Phospho-Ser137) Antibody
Host Species	Rabbit
Clonality	Polyclonal
Purification	Antibodies were produced by immunizing rabbits with synthetic phosphopeptide and KLH conjugates. Antibodies were purified by affinity-chromatography using epitope-specific phosphopeptide. Non-phospho specific antibodies were removed by chromatography using non-phosphopeptide.
Applications	WB
Species Reactivity	Hu Ms Rt
Specificity	The antibody detects endogenous levels of PLK1 only when phosphorylated at serine 137.
Immunogen Type	peptide
Immunogen Description	Peptide sequence around phosphorylation site of serine 137 (R-R-S(p)-L-L) derived from Human PLK1.
Target Name	PLK1
Modification	Phospho
Other Names	Polo-like kinase 1; PLK-1; Serine/threonine-protein kinase 13; STPK13
Accession No.	Swiss-Prot#:P53350;NCBI Gene#:5347
Uniprot	P53350
GeneID	5347;
SDS-PAGE MW	68kd
Concentration	1.0mg/ml
Formulation	Rabbit IgG in phosphate buffered saline (without Mg ²⁺ and Ca ²⁺), pH 7.4, 150mM NaCl, 0.02% sodium azide and 50% glycerol.
Storage	Store at -20°C

Application Details

Western blotting: 1:500~1:3000

Images



Western blot analysis of extracts from Jurkat cells treated with PMA, using PLK1 (Phospho-Ser137) antibody #12118. The lane on the right is treated with the synthesized peptide.

Background

Serine/threonine-protein kinase that performs several important functions throughout M phase of the cell cycle, including the regulation of centrosome maturation and spindle assembly, the removal of cohesins from chromosome arms, the inactivation of anaphase-promoting complex/cyclosome (APC/C) inhibitors, and the regulation of mitotic exit and cytokinesis. Polo-like kinase proteins acts by binding and phosphorylating proteins are that already phosphorylated on a specific motif recognized by the POLO box domains. Phosphorylates BORA, BUB1B/BUBR1, CCNB1, CDC25C, CEP55, ECT2, ERCC6L, FBXO5/EMI1, FOXM1, KIF20A/MKLP2, CENPU, NEDD1, NINL, NPM1, NUDC, PKMYT1/MYT1, KIZ, PPP1R12A/MYPT1, PRC1, RACGAP1/CYK4, SGOL1, STAG2/SA2, TEX14, TOPORS, p73/TP73, TPT1 and WEE1. Plays a key role in centrosome functions and the assembly of bipolar spindles by phosphorylating KIZ, NEDD1 and NINL.

Note: This product is for in vitro research use only