

Myb (Phospho-Ser532) Antibody

Catalog No: #12145

Package Size: #12145-1 50ul #12145-2 100ul

Orders: order@signalwayantibody.comSupport: tech@signalwayantibody.com

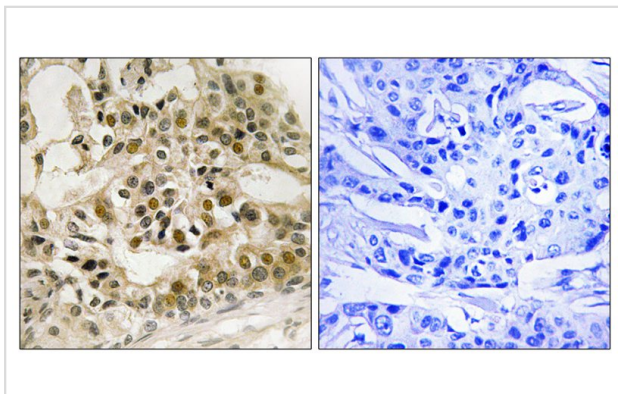
Description

Product Name	Myb (Phospho-Ser532) Antibody
Host Species	Rabbit
Clonality	Polyclonal
Purification	Antibodies were produced by immunizing rabbits with synthetic phosphopeptide and KLH conjugates. Antibodies were purified by affinity-chromatography using epitope-specific phosphopeptide. Non-phospho specific antibodies were removed by chromatography using non-phosphopeptide.
Applications	IHC
Species Reactivity	Hu Ms
Specificity	The antibody detects endogenous levels of Myb only when phosphorylated at serine 532.
Immunogen Type	peptide
Immunogen Description	Peptide sequence around phosphorylation site of serine 532 (V-E-S(p)-P-T) derived from Human Myb.
Target Name	Myb
Modification	Phospho
Other Names	C-myb; Myb proto-oncogene protein
Accession No.	Swiss-Prot#:P10242;NCBI Gene#:4602
Uniprot	P10242
GeneID	4602;
Concentration	1.0mg/ml
Formulation	Rabbit IgG in phosphate buffered saline (without Mg ²⁺ and Ca ²⁺), pH 7.4, 150mM NaCl, 0.02% sodium azide and 50% glycerol.
Storage	Store at -20°C

Application Details

Immunohistochemistry: 1:50~1:100

Images



Immunohistochemistry analysis of paraffin-embedded human breast carcinoma tissue using Myb (Phospho-Ser532) antibody #12145. The picture on the right is treated with the synthesized peptide.

Background

Transcriptional activator; DNA-binding protein that specifically recognize the sequence 5'-YAAC[GT]G-3'. Plays an important role in the control of proliferation and differentiation of hematopoietic progenitor cells.

Note: This product is for in vitro research use only