

## CHEK1(Phospho-Ser317) antibody

Catalog No: #12158

Package Size: #12158-1 50ul #12158-2 100ul

Orders: order@signalwayantibody.com

Support: tech@signalwayantibody.com

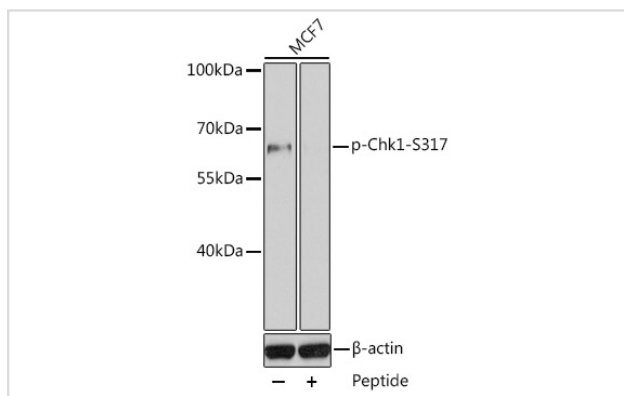
## Description

Product Name	CHEK1(Phospho-Ser317) antibody
Host Species	Rabbit
Clonality	Polyclonal
Isotype	IgG
Purification	Affinity purification
Applications	WB
Species Reactivity	Human
Specificity	The antibody detects endogenous level of CHEK1 only when phosphorylated at serine 317.
Immunogen Type	Peptide
Immunogen Description	A synthetic phosphorylated peptide around S317 of human Chk1 (NP_001265.2).
Target Name	CHEK1
Modification	Phospho
Other Names	CHEK1;CHK1
Accession No.	Uniprot:O14757GenelD:1111
Uniprot	O14757
GenelD	1111
SDS-PAGE MW	60kDa
Concentration	1.0mg/ml
Formulation	PBS with 0.02% sodium azide,50% glycerol,pH7.3.
Storage	Store at -20°C. Avoid freeze / thaw cycles.

## Application Details

WB □ 1:500 - 1:2000

## Images



Western blot analysis of extracts of MCF7 cell line, using Phospho-Chk1-S317 antibody.

## Background

---

The protein encoded by this gene belongs to the Ser/Thr protein kinase family. It is required for checkpoint mediated cell cycle arrest in response to DNA damage or the presence of unreplicated DNA. This protein acts to integrate signals from ATM and ATR, two cell cycle proteins involved in DNA damage responses, that also associate with chromatin in meiotic prophase I. Phosphorylation of CDC25A protein phosphatase by this protein is required for cells to delay cell cycle progression in response to double-strand DNA breaks. Several alternatively spliced transcript variants have been found for this gene.

---

Note: This product is for in vitro research use only