

RB(Phospho-Ser811) antibody

Catalog No: #12173

Package Size: #12173-1 50ul #12173-2 100ul

Orders: order@signalwayantibody.com

Support: tech@signalwayantibody.com

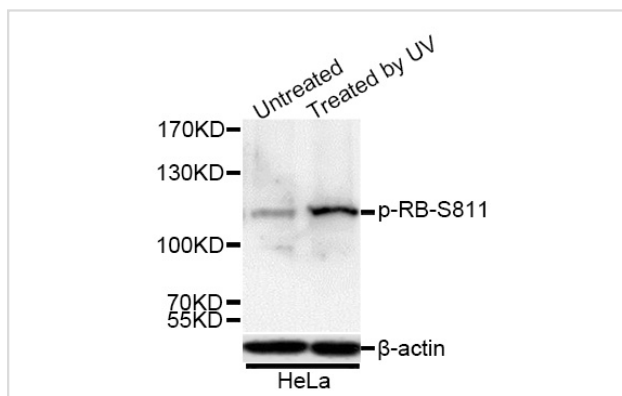
Description

Product Name	RB(Phospho-Ser811) antibody
Host Species	Rabbit
Clonality	Polyclonal
Isotype	IgG
Purification	Affinity purification
Applications	WB
Species Reactivity	Human
Specificity	The antibody detects endogenous level of RB only when phosphorylated at serine 811.
Immunogen Type	Peptide
Immunogen Description	A synthetic phosphorylated peptide around S811 of human RB (NP_000312.2).
Target Name	RB
Modification	Phospho
Other Names	OSRC;PPP1R130;RB;p105-Rb;pRb;pp110;RB1;Rb
Accession No.	Uniprot:P06400GeneID:5925
Uniprot	P06400
GeneID	5925
SDS-PAGE MW	106kDa
Concentration	1.0mg/ml
Formulation	PBS with 0.02% sodium azide,50% glycerol,pH7.3.
Storage	Store at -20°C. Avoid freeze / thaw cycles.

Application Details

WB □ 1:1000 - 1:2000

Images



Western blot analysis of extracts of HeLa cells, using Phospho-RB-S811 antibody.

Background

The protein encoded by this gene is a negative regulator of the cell cycle and was the first tumor suppressor gene found. The encoded protein also stabilizes constitutive heterochromatin to maintain the overall chromatin structure. The active, hypophosphorylated form of the protein binds transcription factor E2F1. Defects in this gene are a cause of childhood cancer retinoblastoma (RB), bladder cancer, and osteogenic sarcoma.

Note: This product is for in vitro research use only