

## MTM1 antibody

Catalog No: #38114

Package Size: #38114-1 50ul #38114-2 100ul

Orders: order@signalwayantibody.com

Support: tech@signalwayantibody.com

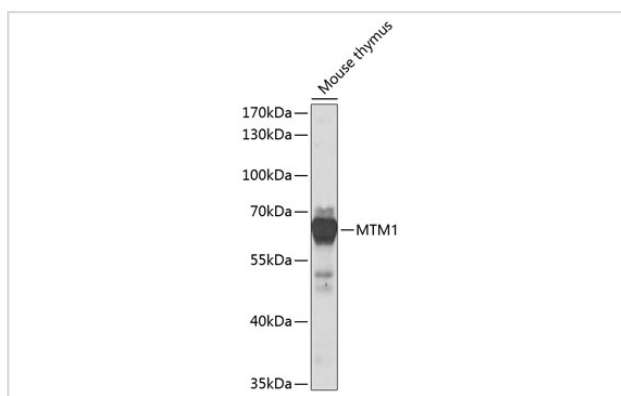
## Description

Product Name	MTM1 antibody
Host Species	Rabbit
Clonality	Polyclonal
Purification	Antibodies were purified by affinity purification using immunogen.
Applications	WB
Species Reactivity	Mouse,Rat
Specificity	The antibody detects endogenous level of total MTM1 protein.
Immunogen Type	Recombinant Protein
Immunogen Description	Recombinant Protein of human MTM1.
Target Name	MTM1
Other Names	MTM1; CG2; myotubularin 1; XLMTM; MTMX; Myotubularin
Accession No.	Swiss-Prot#: Q13496NCBI Gene ID: 4534
Uniprot	Q13496
GeneID	4534;
SDS-PAGE MW	70kd
Concentration	1.0mg/ml
Formulation	Supplied at 1.0mg/mL in phosphate buffered saline (without Mg <sup>2+</sup> and Ca <sup>2+</sup> ), pH 7.4, 150mM NaCl, 0.02% sodium azide and 50% glycerol.
Storage	Store at -20°C

## Application Details

WB □ 1:500 - 1:2000

## Images



Western blot analysis of extracts of mouse thymus, using MTM1 at 1:1000 dilution.

## Background

---

This gene encodes a dual-specificity phosphatase that acts on both phosphotyrosine and phosphoserine. It is required for muscle cell differentiation and mutations in this gene have been identified as being responsible for X-linked myotubular myopathy. [provided by RefSeq, Jul 2008]

---

Note: This product is for in vitro research use only