

## AKR1B10 antibody

Catalog No: #22305

Orders: order@signalwayantibody.com

Support: tech@signalwayantibody.com

## Description

Product Name	AKR1B10 antibody
Host Species	Rabbit
Clonality	Polyclonal
Purification	Purified by antigen-affinity chromatography.
Applications	WB IHC IF
Species Reactivity	Hu
Immunogen Type	Recombinant protein
Immunogen Description	Recombinant protein fragment contain a sequence corresponding to a region within amino acids 1 and 286 of AKR1B10
Target Name	AKR1B10
Accession No.	Swiss-Prot:O60218Gene ID:57016
Uniprot	O60218
GeneID	57016;
Concentration	1mg/ml
Formulation	Supplied in 0.1M Tris-buffered saline with 10% Glycerol (pH7.0). 0.01% Thimerosal was added as a preservative.
Storage	Store at -20°C for long term preservation (recommended). Store at 4°C for short term use.

## Application Details

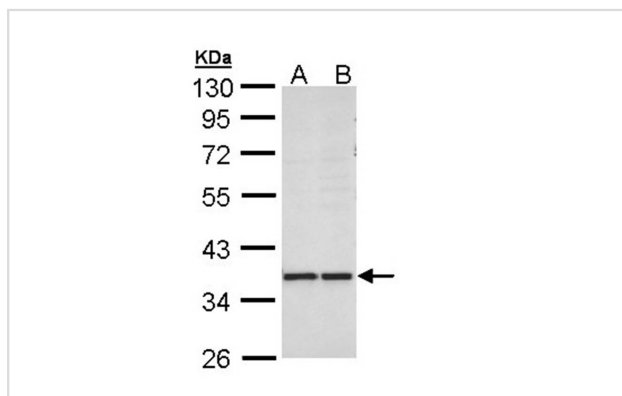
Predicted MW: 36kd

Western blotting: 1:500-1:3000

Immunohistochemistry: 1:100-1:500

Immunofluorescence: 1:100-1:200

## Images



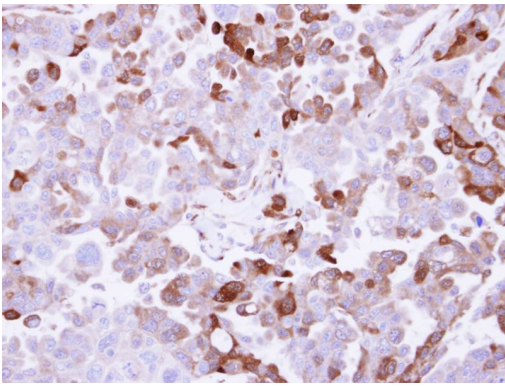
Sample (30 ug of whole cell lysate)

A: MOLT4

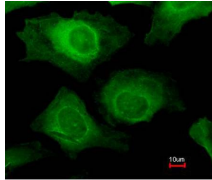
B: Raji

10% SDS PAGE

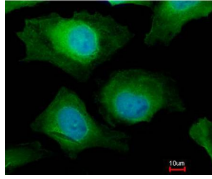
Primary antibody diluted at 1: 1000



Immunohistochemical analysis of paraffin-embedded OVCAR3 xenograft, using AKR1B10 antibody at 1: 500 dilution.



Merged with DNA probe



Immunofluorescence analysis of paraformaldehyde-fixed HeLa, using AKR1B10 antibody at 1: 200 dilution.

## Background

This gene encodes a member of the aldo/keto reductase superfamily, which consists of more than 40 known enzymes and proteins. This member can efficiently reduce aliphatic and aromatic aldehydes, and it is less active on hexoses. It is highly expressed in adrenal gland, small intestine, and colon, and may play an important role in liver carcinogenesis. [provided by RefSeq]

Note: This product is for in vitro research use only