

NTF4 antibody

Catalog No: #38180

Package Size: #38180-1 50ul #38180-2 100ul

Orders: order@signalwayantibody.comSupport: tech@signalwayantibody.com

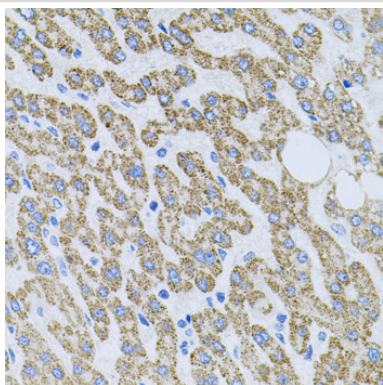
Description

Product Name	NTF4 antibody
Host Species	Rabbit
Clonality	Polyclonal
Isotype	IgG
Purification	Affinity purification
Applications	WB,IHC,IF
Species Reactivity	Human,Mouse,Rat
Specificity	The antibody detects endogenous level of total NTF4 protein.
Immunogen Type	Recombinant Protein
Immunogen Description	Recombinant fusion protein of human NTF4 (NP_006170.1).
Target Name	NTF4
Other Names	NTF4;GLC10;GLC10;NT-4;NT-4/5;NT-5;NT4;NT5;NTF5
Accession No.	Uniprot:P34130GeneID:4909
Uniprot	P34130
GeneID	4909
SDS-PAGE MW	22KDa
Concentration	1.0mg/ml
Formulation	PBS with 0.02% sodium azide,50% glycerol,pH7.3.
Storage	Store at -20°C. Avoid freeze / thaw cycles.

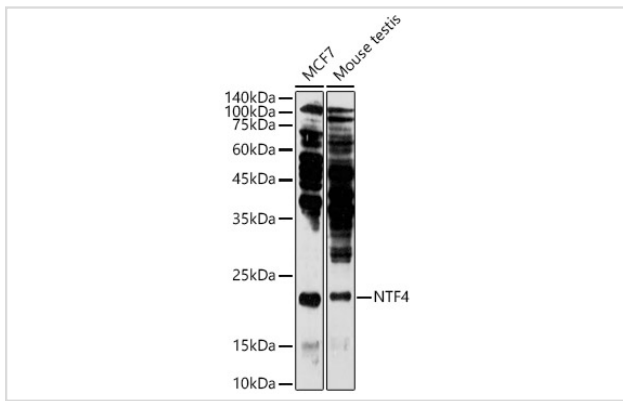
Application Details

WB \square 1:500 - 1:2000 IHC \square 1:100 - 1:200 IF \square 1:50 - 1:200

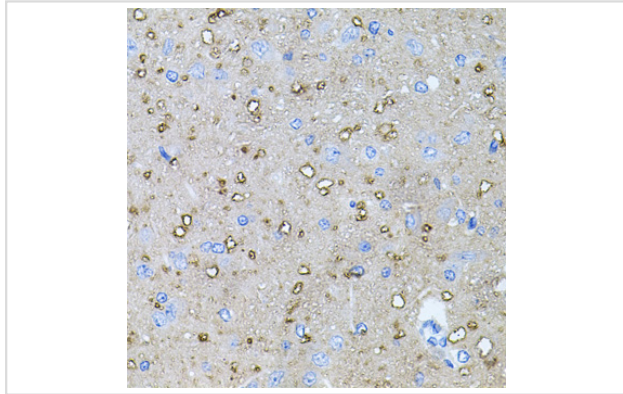
Images



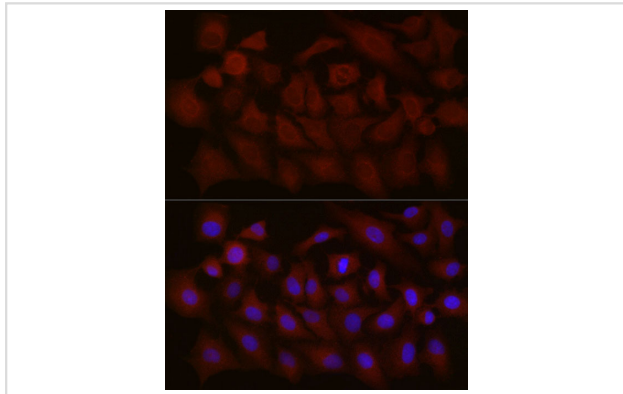
Immunohistochemistry of paraffin-embedded human liver damage using NTF4 antibody.



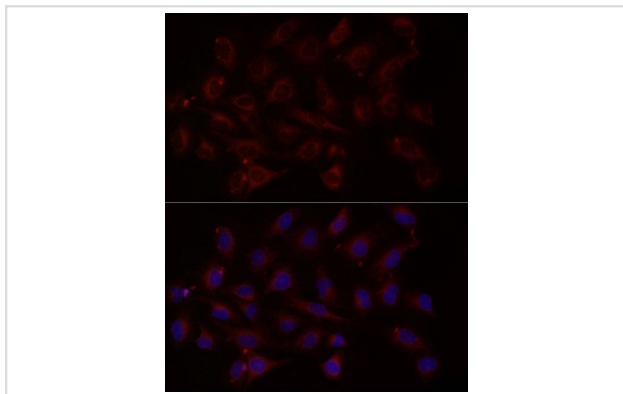
Western blot analysis of extracts of various cell lines, using NTF4 antibody.



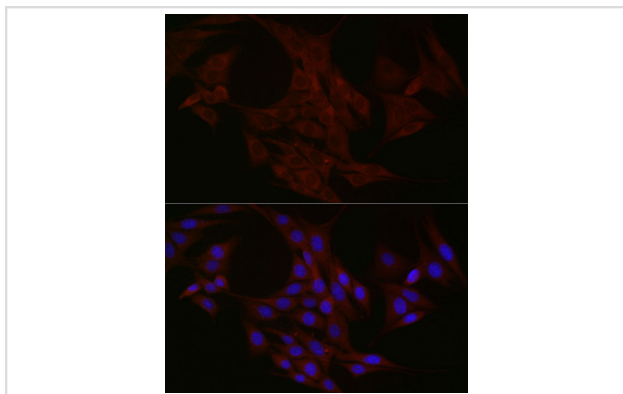
Immunohistochemistry of paraffin-embedded rat brain using NTF4 antibody.



Immunofluorescence analysis of A-549 cells using NTF4 Rabbit pAb.



Immunofluorescence analysis of PC-3 cells using NTF4 Rabbit pAb.



Immunofluorescence analysis of NIH/3T3 cells using NTF4 Rabbit pAb.

Background

This gene is a member of a family of neurotrophic factors, neurotrophins, that control survival and differentiation of mammalian neurons. The expression of this gene is ubiquitous and less influenced by environmental signals. While knock-outs of other neurotrophins including nerve growth factor, brain-derived neurotrophic factor, and neurotrophin 3 prove lethal during early postnatal development, NTF5-deficient mice only show minor cellular deficits and develop normally to adulthood.

Note: This product is for in vitro research use only