

RAB7A antibody

Catalog No: #38205

Package Size: #38205-1 50ul #38205-2 100ul

Orders: order@signalwayantibody.comSupport: tech@signalwayantibody.com

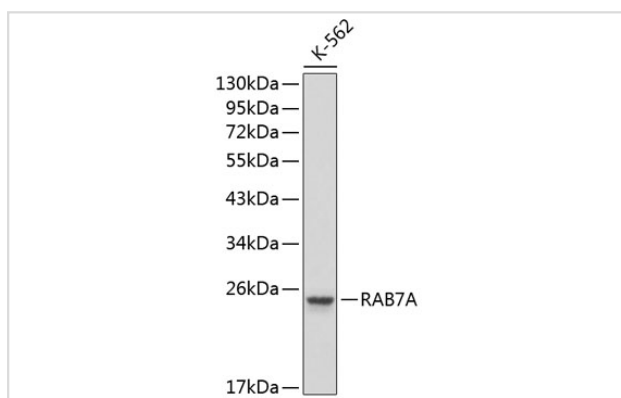
Description

Product Name	RAB7A antibody
Host Species	Rabbit
Clonality	Polyclonal
Purification	Affinity purification
Applications	WB
Species Reactivity	Human,Mouse,Rat
Specificity	The antibody detects endogenous level of total RAB7A protein.
Immunogen Type	Peptide
Immunogen Description	A synthetic peptide of human RAB7.
Target Name	RAB7A
Other Names	RAB7A;FLJ20819;PRO2706;RAB7;
Accession No.	Swiss-Prot#: P51149NCBI Gene ID: 7879
Uniprot	P51149
GeneID	7879;
SDS-PAGE MW	23kd
Formulation	PBS with 0.01% thimerosal, 50% glycerol, pH7.3.
Storage	Store at -20°C

Application Details

WB 1:500-1:2000

Images



Western blot analysis of extracts of K-562 cells, using RAB7A

Background

RAB family members are small, RAS-related GTP-binding proteins that are important regulators of vesicular transport. Each RAB protein targets multiple proteins that act in exocytic / endocytic pathways. This gene encodes a RAB family member that regulates vesicle traffic in the late

endosomes and also from late endosomes to lysosomes. This encoded protein is also involved in the cellular vacuolation of the VacA cytotoxin of *Helicobacter pylori*. Mutations at highly conserved amino acid residues in this gene have caused some forms of Charcot-Marie-Tooth (CMT) type 2 neuropathies.

Note: This product is for in vitro research use only