

## CXCL10 antibody

Catalog No: #38240

Package Size: #38240-1 50ul #38240-2 100ul

Orders: order@signalwayantibody.com

Support: tech@signalwayantibody.com

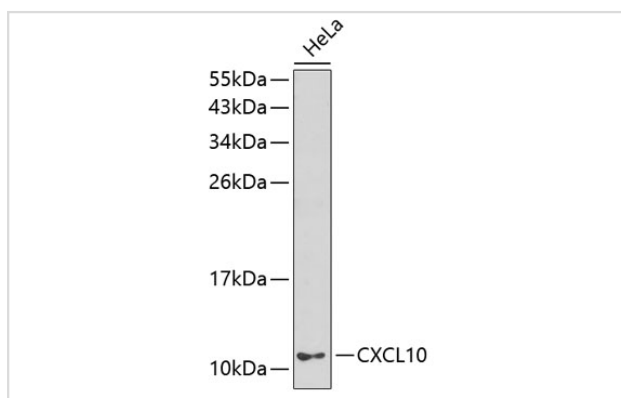
## Description

Product Name	CXCL10 antibody
Host Species	Rabbit
Clonality	Polyclonal
Purification	Antibodies were purified by affinity purification using immunogen.
Applications	WB
Species Reactivity	Human
Specificity	The antibody detects endogenous level of total CXCL10 protein.
Immunogen Type	Recombinant Protein
Immunogen Description	Recombinant protein of human CXCL10.
Target Name	CXCL10
Other Names	C7; IFI10; INP10; IP-10; crg-2; mob-1; SCYB10; gIP-10;
Accession No.	Swiss-Prot#: P02778NCBI Gene ID: 3627
Uniprot	P02778
GeneID	3627;
SDS-PAGE MW	10kd
Concentration	1.0mg/ml
Formulation	Supplied at 1.0mg/mL in phosphate buffered saline (without Mg <sup>2+</sup> and Ca <sup>2+</sup> ), pH 7.4, 150mM NaCl, 0.02% sodium azide and 50% glycerol.
Storage	Store at -20°C

## Application Details

WB 1:500 - 1:2000

## Images



Western blot analysis of extracts of HeLa cells, using CXCL10

## Background

---

This gene encodes a chemokine of the CXC subfamily and ligand for the receptor CXCR3. Binding of this protein to CXCR3 results in pleiotropic effects, including stimulation of monocytes, natural killer and T-cell migration, and modulation of adhesion molecule expression. [provided by RefSeq, Jul 2008]

---

Note: This product is for in vitro research use only