

## CHI3L1 antibody

Catalog No: #38288

Package Size: #38288-1 50ul #38288-2 100ul

Orders: order@signalwayantibody.com

Support: tech@signalwayantibody.com

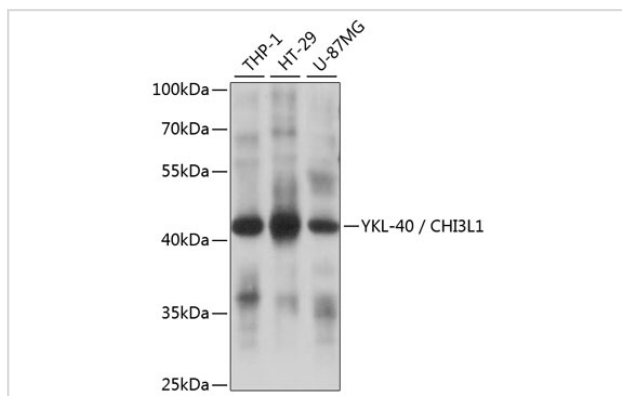
## Description

Product Name	CHI3L1 antibody
Host Species	Rabbit
Clonality	Polyclonal
Purification	Antibodies were purified by affinity purification using immunogen.
Applications	WB,IHC,IF
Species Reactivity	Human,Mouse,Rat
Specificity	The antibody detects endogenous level of total CHI3L1 protein.
Immunogen Type	Recombinant Protein
Immunogen Description	Recombinant protein of human CHI3L1.
Target Name	CHI3L1
Other Names	ASRT7; DKFZp686N19119; FLJ38139; GP39; HC-gp39; HCGP-3P; YKL40; YYL-40;
Accession No.	Swiss-Prot#: P36222NCBI Gene ID: 1116
Uniprot	P36222
GeneID	1116;
SDS-PAGE MW	43kd
Concentration	1.0mg/ml
Formulation	Supplied at 1.0mg/mL in phosphate buffered saline (without Mg <sup>2+</sup> and Ca <sup>2+</sup> ), pH 7.4, 150mM NaCl, 0.02% sodium azide and 50% glycerol.
Storage	Store at -20°C

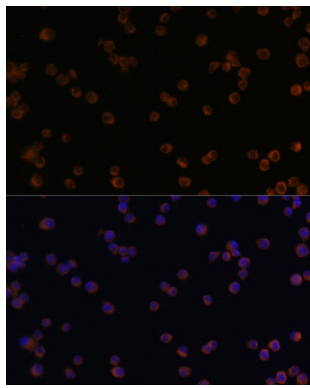
## Application Details

WB □ 1:500 - 1:2000 IHC □ 1:50 - 1:200 IF □ 1:50 - 1:200

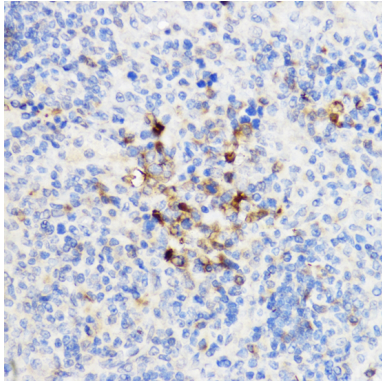
## Images



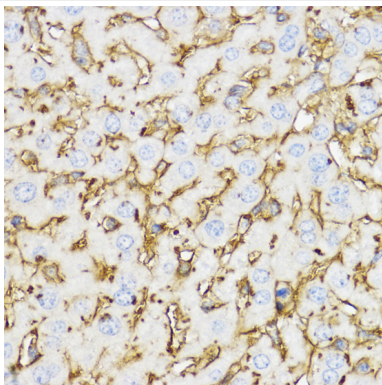
Western blot analysis of extracts of various cell lines, using YKL-40 / CHI3L1 at 1:1000 dilution.



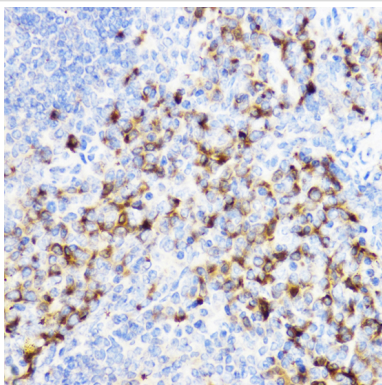
Immunofluorescence analysis of Raw264.7 cells using YKL-40 / CHI3L1 at dilution of 1:100. Blue: DAPI for nuclear staining.



Immunohistochemistry of paraffin-embedded rat spleen using YKL-40 / CHI3L1 at dilution of 1:100 (40x lens).



Immunohistochemistry of paraffin-embedded mouse liver using YKL-40 / CHI3L1 at dilution of 1:100 (40x lens).



Immunohistochemistry of paraffin-embedded mouse spleen using YKL-40 / CHI3L1 at dilution of 1:100 (40x lens).

## Background

Chitinases catalyze the hydrolysis of chitin, which is an abundant glycopolymer found in insect exoskeletons and fungal cell walls. The glycoside hydrolase 18 family of chitinases includes eight human family members. This gene encodes a glycoprotein member of the glycosyl hydrolase 18 family. The protein lacks chitinase activity and is secreted by activated macrophages, chondrocytes, neutrophils and synovial cells. The protein is thought to play a role in the process of inflammation and tissue remodeling. [provided by RefSeq, Sep 2009]

---

Note: This product is for in vitro research use only