

## SCNN1B antibody

Catalog No: #38293

Package Size: #38293-1 50ul #38293-2 100ul

Orders: [order@signalwayantibody.com](mailto:order@signalwayantibody.com)Support: [tech@signalwayantibody.com](mailto:tech@signalwayantibody.com)

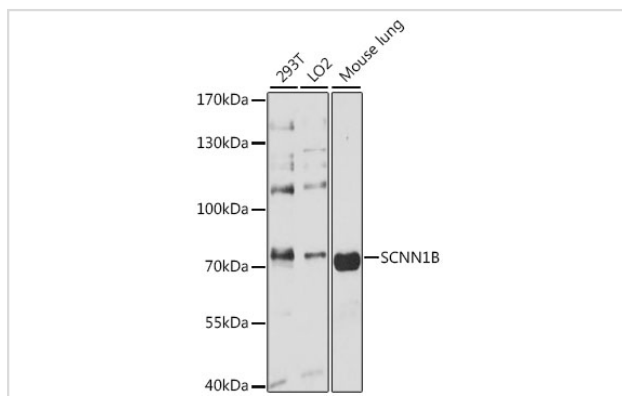
## Description

Product Name	SCNN1B antibody
Host Species	Rabbit
Clonality	Polyclonal
Isotype	IgG
Purification	Affinity purification
Applications	WB
Species Reactivity	Human,Mouse
Specificity	The antibody detects endogenous level of total SCNN1B protein.
Immunogen Type	Recombinant Protein
Immunogen Description	Recombinant fusion protein of human SCNN1B (NP_000327.2).
Target Name	SCNN1B
Other Names	SCNN1B;BESC1;ENaCb;ENaCbeta;SCNEB
Accession No.	Uniprot:P51168GeneID:6338
Uniprot	P51168
GeneID	6338
SDS-PAGE MW	75kDa
Concentration	1.0mg/ml
Formulation	PBS with 0.02% sodium azide,50% glycerol,pH7.3.
Storage	Store at -20°C. Avoid freeze / thaw cycles.

## Application Details

WB □ 1:500 - 1:2000

## Images



Western blot analysis of extracts of various cell lines, using SCNN1B antibody.

## Background

---

Nonvoltage-gated, amiloride-sensitive, sodium channels control fluid and electrolyte transport across epithelia in many organs. These channels are heteromeric complexes consisting of 3 subunits: alpha, beta, and gamma. This gene encodes the beta subunit, and mutations in this gene have been associated with pseudohypoaldosteronism type 1 (PHA1), and Liddle syndrome.

---

Note: This product is for in vitro research use only