

SLPI antibody

Catalog No: #38316

Package Size: #38316-1 50ul #38316-2 100ul

Orders: order@signalwayantibody.com

Support: tech@signalwayantibody.com

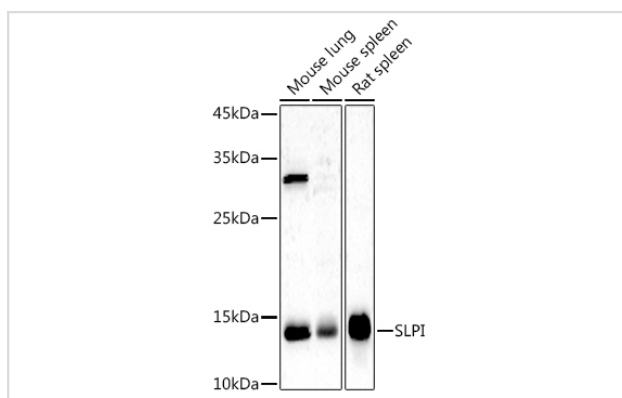
Description

| | |
|-----------------------|--|
| Product Name | SLPI antibody |
| Host Species | Rabbit |
| Clonality | Polyclonal |
| Isotype | IgG |
| Purification | Affinity purification |
| Applications | WB |
| Species Reactivity | Human,Mouse,Rat |
| Specificity | The antibody detects endogenous level of total SLPI protein. |
| Immunogen Type | Recombinant Protein |
| Immunogen Description | Recombinant fusion protein of human SLPI (NP_003055.1). |
| Target Name | SLPI |
| Other Names | SLPI;ALK1;ALP;BLPI;HUSI;HUSI-I;MPI;WAP4;WFDC4 |
| Accession No. | Uniprot:P03973GeneID:6590 |
| Uniprot | P03973 |
| GeneID | 6590 |
| SDS-PAGE MW | 12KDa |
| Concentration | 1.0mg/ml |
| Formulation | PBS with 0.02% sodium azide,50% glycerol,pH7.3. |
| Storage | Store at -20°C. Avoid freeze / thaw cycles. |

Application Details

WB □ 1:500 - 1:2000

Images



Western blot analysis of extracts of various cell lines, using SLPI antibody.

Background

This gene encodes a secreted inhibitor which protects epithelial tissues from serine proteases. It is found in various secretions including seminal plasma, cervical mucus, and bronchial secretions, and has affinity for trypsin, leukocyte elastase, and cathepsin G. Its inhibitory effect contributes to the immune response by protecting epithelial surfaces from attack by endogenous proteolytic enzymes. This antimicrobial protein has antibacterial, antifungal and antiviral activity.

Note: This product is for in vitro research use only