

ACPP antibody

Catalog No: #38324

Package Size: #38324-1 50ul #38324-2 100ul

Orders: order@signalwayantibody.com

Support: tech@signalwayantibody.com

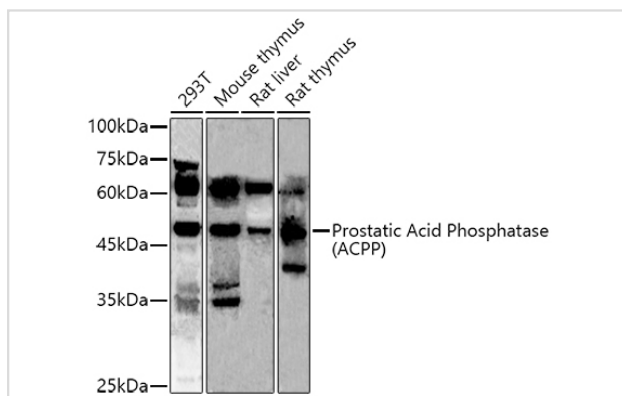
Description

Product Name	ACPP antibody
Host Species	Rabbit
Clonality	Polyclonal
Isotype	IgG
Purification	Affinity purification
Applications	WB,IHC,IF
Species Reactivity	Human,Mouse,Rat
Specificity	The antibody detects endogenous level of total ACPP protein.
Immunogen Type	Recombinant Protein
Immunogen Description	Recombinant fusion protein of human Prostatic Acid Phosphatase (PAP/Prostatic Acid Phosphatase (ACPP)) (NP_001090.2).
Target Name	ACPP
Other Names	ACPP;5'-NT;ACP-3;ACP3
Accession No.	Uniprot:P15309GeneID:55
Uniprot	P15309
GeneID	55
SDS-PAGE MW	50KDa
Concentration	1.0mg/ml
Formulation	PBS with 0.02% sodium azide,50% glycerol,pH7.3.
Storage	Store at -20°C. Avoid freeze / thaw cycles.

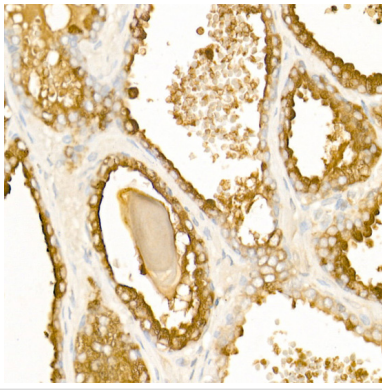
Application Details

WB 1:500 - 1:2000 IHC 1:50 - 1:200 IF 1:50 - 1:200

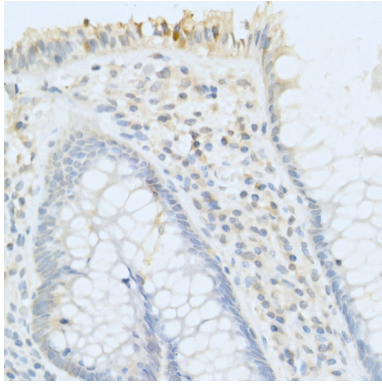
Images



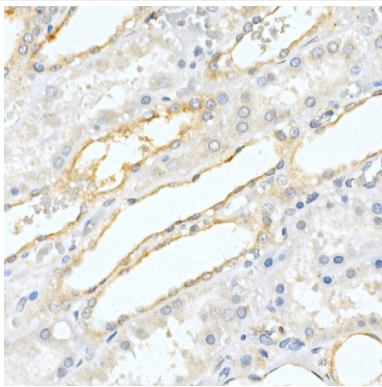
Western blot analysis of extracts of various cell lines, using Prostatic Acid Phosphatase (ACPP) antibody.



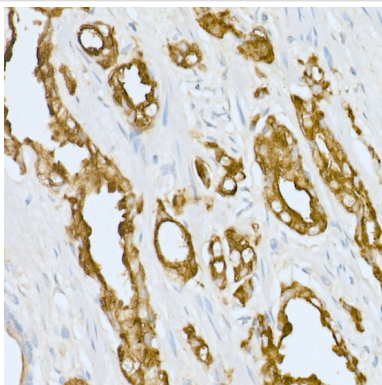
Immunohistochemistry of paraffin-embedded Human benign prostatic hyperplasia using Prostatic Acid Phosphatase (ACPP) Rabbit pAb.



Immunohistochemistry of paraffin-embedded Human colon (negative control sample) using Prostatic Acid Phosphatase (ACPP) Rabbit pAb.



Immunohistochemistry of paraffin-embedded human kidney using Prostatic Acid Phosphatase (ACPP) Rabbit pAb.



Immunohistochemistry of paraffin-embedded human prostate cancer using Prostatic Acid Phosphatase (ACPP) Rabbit pAb.

Background

This gene encodes an enzyme that catalyzes the conversion of orthophosphoric monoester to alcohol and orthophosphate. It is synthesized under androgen regulation and is secreted by the epithelial cells of the prostate gland. An alternatively spliced transcript variant encoding a longer isoform has been found for this gene. This isoform contains a transmembrane domain and is localized in the plasma membrane-endosomal-lysosomal pathway.

Note: This product is for in vitro research use only