

RPS27A antibody

Catalog No: #38336

Package Size: #38336-1 50ul #38336-2 100ul

Orders: order@signalwayantibody.comSupport: tech@signalwayantibody.com

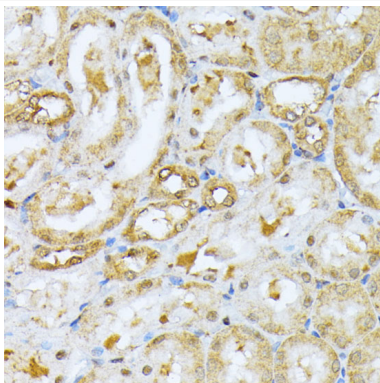
Description

Product Name	RPS27A antibody
Host Species	Rabbit
Clonality	Polyclonal
Isotype	IgG
Purification	Affinity purification
Applications	WB,IHC
Species Reactivity	Human,Mouse,Rat
Specificity	The antibody detects endogenous level of total RPS27A protein.
Immunogen Type	Recombinant Protein
Immunogen Description	Recombinant fusion protein of human RPS27A (NP_001170884.1).
Target Name	RPS27A
Other Names	RPS27A;CEP80;HEL112;S27A;UBA80;UBC;UBCEP1;UBCEP80
Accession No.	Uniprot:P62979GeneID:6233
Uniprot	P62979
GeneID	6233
SDS-PAGE MW	14kDa
Concentration	1.0mg/ml
Formulation	PBS with 0.02% sodium azide,50% glycerol,pH7.3.
Storage	Store at -20°C. Avoid freeze / thaw cycles.

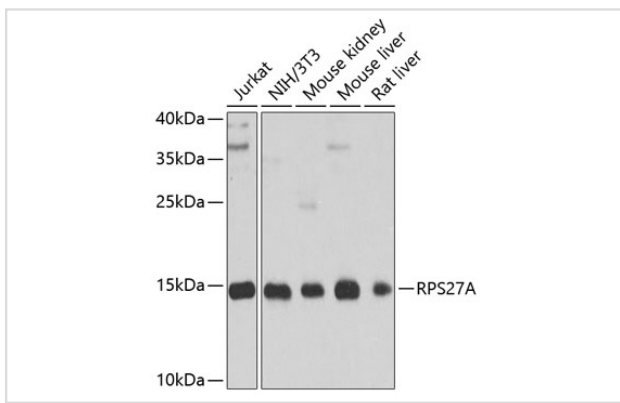
Application Details

WB □ 1:500 - 1:2000 IHC □ 1:50 - 1:200

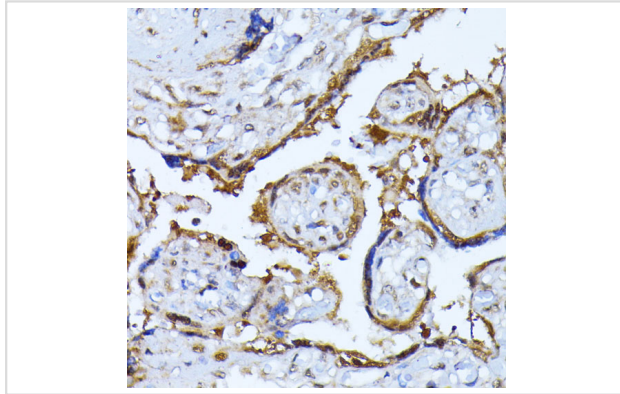
Images



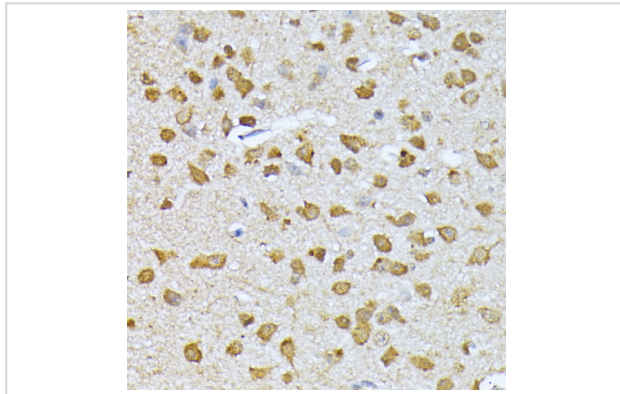
Immunohistochemistry of paraffin-embedded rat kidney using RPS27A antibody.



Western blot analysis of extracts of various cell lines, using RPS27A antibody.



Immunohistochemistry of paraffin-embedded human placenta using RPS27A antibody.



Immunohistochemistry of paraffin-embedded mouse brain using RPS27A antibody.

Background

Ubiquitin, a highly conserved protein that has a major role in targeting cellular proteins for degradation by the 26S proteasome, is synthesized as a precursor protein consisting of either polyubiquitin chains or a single ubiquitin fused to an unrelated protein. This gene encodes a fusion protein consisting of ubiquitin at the N terminus and ribosomal protein S27a at the C terminus. When expressed in yeast, the protein is post-translationally processed, generating free ubiquitin monomer and ribosomal protein S27a. Ribosomal protein S27a is a component of the 40S subunit of the ribosome and belongs to the S27AE family of ribosomal proteins. It contains C4-type zinc finger domains and is located in the cytoplasm. Pseudogenes derived from this gene are present in the genome. As with ribosomal protein S27a, ribosomal protein L40 is also synthesized as a fusion protein with ubiquitin; similarly, ribosomal protein S30 is synthesized as a fusion protein with the ubiquitin-like protein fubi. Multiple alternatively spliced transcript variants that encode the same proteins have been identified.

Note: This product is for in vitro research use only