

SLAMF1 antibody

Catalog No: #38342

Package Size: #38342-1 50ul #38342-2 100ul

Orders: order@signalwayantibody.com

Support: tech@signalwayantibody.com

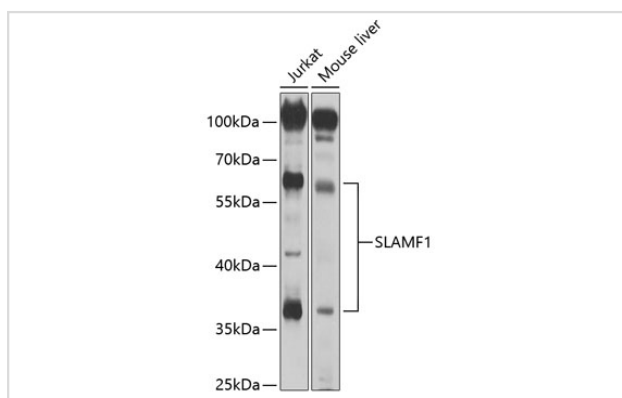
Description

Product Name	SLAMF1 antibody
Host Species	Rabbit
Clonality	Polyclonal
Purification	Antibodies were purified by affinity purification using immunogen.
Applications	WB
Species Reactivity	Human,Mouse
Specificity	The antibody detects endogenous level of total SLAMF1 protein.
Immunogen Type	Recombinant Protein
Immunogen Description	Recombinant protein of human SLAMF1.
Target Name	SLAMF1
Other Names	CD150; CDw150; SLAM;
Accession No.	Swiss-Prot#: Q13291NCBI Gene ID: 6504
Uniprot	Q13291
GeneID	6504;
SDS-PAGE MW	70kd
Concentration	1.0mg/ml
Formulation	Supplied at 1.0mg/mL in phosphate buffered saline (without Mg ²⁺ and Ca ²⁺), pH 7.4, 150mM NaCl, 0.02% sodium azide and 50% glycerol.
Storage	Store at -20°C

Application Details

WB □ 1:500 - 1:2000

Images



Western blot analysis of extracts of various cell lines, using SLAMF1 at 1:1000 dilution.

Background

Following occupancy of the T cell receptor by antigen, T cell proliferation and lymphokine production are determined by a second costimulatory signal delivered by a ligand expressed on antigen-presenting cells. SLAM (for signaling lymphocyte-activation molecule, also designated CDw150) is a novel receptor on T cells that, when engaged, potentiates T cell expansion in a CD28-independent manner. SAP (for SLAM-associated protein) contains an SH2 domain and functions to inhibit SH-PTP2 recruitment to the SLAM docking site, an activity induced by Fyn phosphorylation of SLAM. Mutations of the SAP gene may be associated with X-linked lympho-proliferative disease (XLP).

Note: This product is for in vitro research use only