

LHX8 antibody

Catalog No: #38343

Package Size: #38343-1 50ul #38343-2 100ul

Orders: order@signalwayantibody.com

Support: tech@signalwayantibody.com

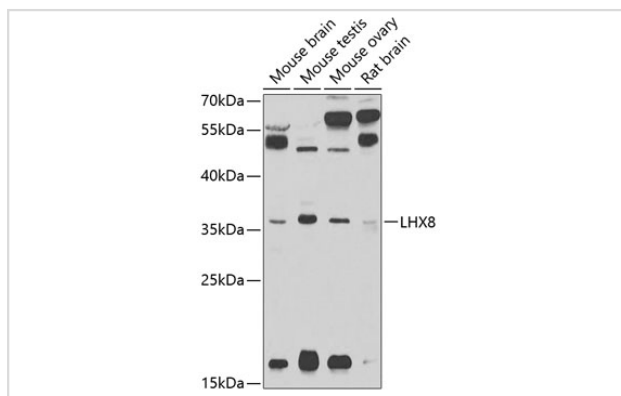
Description

Product Name	LHX8 antibody
Host Species	Rabbit
Clonality	Polyclonal
Isotype	IgG
Purification	Affinity purification
Applications	WB
Species Reactivity	Mouse,Rat
Specificity	The antibody detects endogenous level of total LHX8 protein.
Immunogen Type	Recombinant Protein
Immunogen Description	Recombinant fusion protein of human LHX8 (NP_001001933.1).
Target Name	LHX8
Other Names	LHX8;LHX7
Accession No.	Uniprot:Q68G74GeneID:431707
Uniprot	Q68G74
GeneID	431707
SDS-PAGE MW	39kDa
Concentration	1.0mg/ml
Formulation	PBS with 0.02% sodium azide,50% glycerol,pH7.3.
Storage	Store at -20°C. Avoid freeze / thaw cycles.

Application Details

WB □ 1:500 - 1:2000

Images



Western blot analysis of extracts of various cell lines, using LHX8 antibody.

Background

The protein encoded by this gene is a member of the LIM homeobox family of proteins, which are involved in patterning and differentiation of various tissue types. These proteins contain two tandemly repeated cysteine-rich double-zinc finger motifs known as LIM domains, in addition to a DNA-binding homeodomain. This family member is a transcription factor that plays a role in tooth morphogenesis. It is also involved in oogenesis and in neuronal differentiation. This gene is a candidate gene for cleft palate, and it is also associated with odontoma formation. Alternative splicing of this gene results in multiple transcript variants.

Note: This product is for in vitro research use only