

## CDKN1C antibody

Catalog No: #38348

Package Size: #38348-1 50ul #38348-2 100ul

Orders: order@signalwayantibody.com

Support: tech@signalwayantibody.com

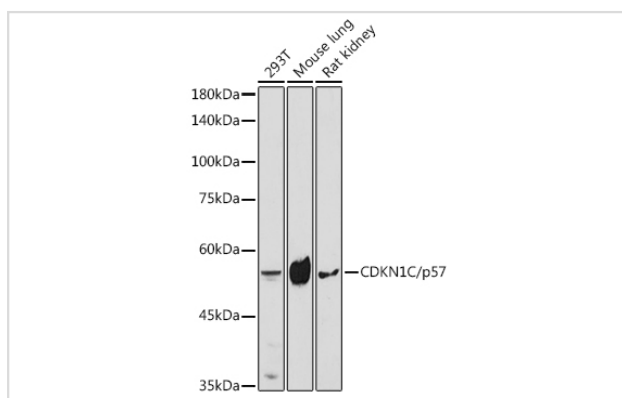
## Description

Product Name	CDKN1C antibody
Host Species	Rabbit
Clonality	Polyclonal
Isotype	IgG
Purification	Affinity purification
Applications	WB
Species Reactivity	Human,Mouse,Rat
Specificity	The antibody detects endogenous level of total CDKN1C protein.
Immunogen Type	Peptide
Immunogen Description	A synthetic peptide of human CDKN1C/p57 Kip2 (NP_000067.1).
Target Name	CDKN1C
Other Names	CDKN1C;BWCR;BWS;KIP2;WBS;p57;p57Kip2
Accession No.	Uniprot:P49918GeneID:1028
Uniprot	P49918
GeneID	1028
SDS-PAGE MW	57KDa
Concentration	1.0mg/ml
Formulation	PBS with 0.02% sodium azide,50% glycerol,pH7.3.
Storage	Store at -20°C. Avoid freeze / thaw cycles.

## Application Details

WB □ 1:500 - 1:2000

## Images



Western blot analysis of extracts of various cell lines, using CDKN1C/p57 Kip2 antibody.

## Background

---

This gene is imprinted, with preferential expression of the maternal allele. The encoded protein is a tight-binding, strong inhibitor of several G1 cyclin/Cdk complexes and a negative regulator of cell proliferation. Mutations in this gene are implicated in sporadic cancers and Beckwith-Wiedemann syndrome, suggesting that this gene is a tumor suppressor candidate. Three transcript variants encoding two different isoforms have been found for this gene.

---

Note: This product is for in vitro research use only