

## CTLA4 antibody

Catalog No: #38349

Package Size: #38349-1 50ul #38349-2 100ul

Orders: order@signalwayantibody.com

Support: tech@signalwayantibody.com

## Description

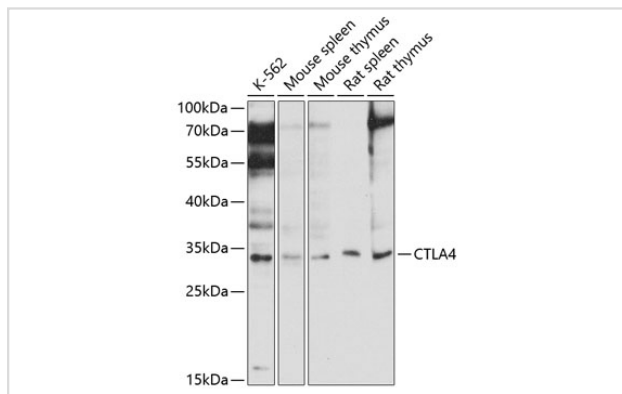
Product Name	CTLA4 antibody
Host Species	Rabbit
Clonality	Polyclonal
Purification	Antibodies were purified by affinity purification using immunogen.
Applications	WB IHC
Species Reactivity	Human,Mouse,Rat
Specificity	The antibody detects endogenous level of total CTLA4 protein.
Immunogen Type	Peptide
Immunogen Description	A synthetic peptide of human AKT1.
Target Name	CTLA4
Other Names	CTLA4;CD;CD152;CELIAC3;CTLA-4;GRD4;GSE;ICOS;IDDM12;
Accession No.	Swiss-Prot#: P16410NCBI Gene ID: 1493
Uniprot	P16410
GeneID	1493;
SDS-PAGE MW	25kd
Concentration	1.0mg/ml
Formulation	Supplied at 1.0mg/mL in phosphate buffered saline (without Mg <sup>2+</sup> and Ca <sup>2+</sup> ), pH 7.4, 150mM NaCl, 0.02% sodium azide and 50% glycerol.
Storage	Store at -20°C

## Application Details

WB □ 1:500 - 1:2000

IHC 1:50 - 1:200

## Images



Western blot analysis of extracts of various cell lines, using CTLA4 at 1:1000 dilution.

## Background

---

This gene is a member of the immunoglobulin superfamily and encodes a protein which transmits an inhibitory signal to T cells. The protein contains a V domain, a transmembrane domain, and a cytoplasmic tail. Alternate transcriptional splice variants, encoding different isoforms, have been characterized. The membrane-bound isoform functions as a homodimer interconnected by a disulfide bond, while the soluble isoform functions as a monomer. Mutations in this gene have been associated with insulin-dependent diabetes mellitus, Graves disease, Hashimoto thyroiditis, celiac disease, systemic lupus erythematosus, thyroid-associated orbitopathy, and other autoimmune diseases. [provided by RefSeq, Jul 2008]

---

Note: This product is for in vitro research use only