

## NTRK1 antibody

Catalog No: #38361

Package Size: #38361-1 50ul #38361-2 100ul

Orders: [order@signalwayantibody.com](mailto:order@signalwayantibody.com)Support: [tech@signalwayantibody.com](mailto:tech@signalwayantibody.com)

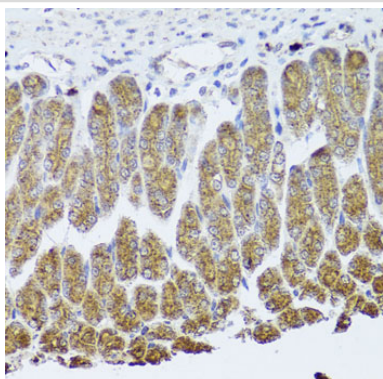
## Description

|                       |   |
|-----------------------|---|
| Product Name          | NTRK1 antibody  |
| Host Species          | Rabbit  |
| Clonality             | Polyclonal  |
| Isotype               | IgG   |
| Purification          | Affinity purification   |
| Applications          | WB,IHC  |
| Species Reactivity    | Human,Mouse,Rat   |
| Specificity           | The antibody detects endogenous level of total NTRK1 protein. |
| Immunogen Type        | Peptide   |
| Immunogen Description | Recombinant fusion protein of human TrkA (NP_002520.2).       |
| Target Name           | NTRK1   |
| Other Names           | NTRK1;MTC;TRK;TRK1;TRKA;Trk-A;p140-TrkA                       |
| Accession No.         | Uniprot:P04629GeneID:4914                                     |
| Uniprot               | P04629  |
| GeneID                | 4914  |
| SDS-PAGE MW           | 120kDa  |
| Concentration         | 1.0mg/ml  |
| Formulation           | PBS with 0.02% sodium azide,50% glycerol,pH7.3.               |
| Storage               | Store at -20°C. Avoid freeze / thaw cycles.                   |

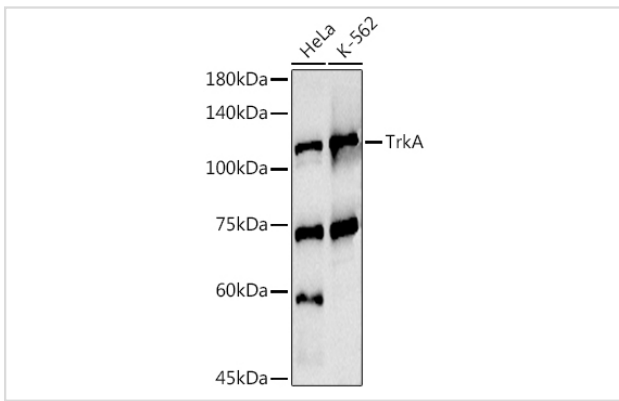
## Application Details

WB □ 1:500 - 1:2000 IHC □ 1:50 - 1:200

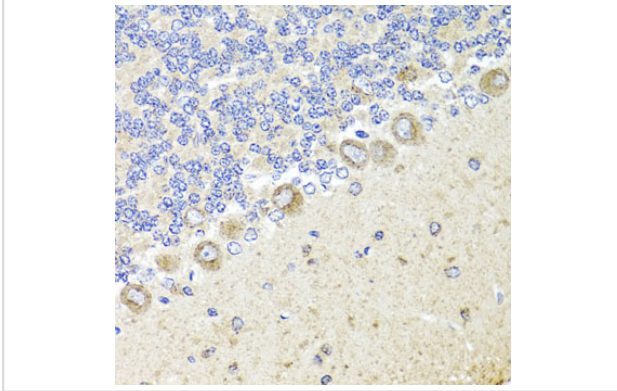
## Images



Immunohistochemistry of paraffin-embedded mouse stomach using TrkA Antibody.



Western blot analysis of extracts of various cell lines, using TrkA antibody.



Immunohistochemistry of paraffin-embedded rat cerebellum using TrkA Antibody.

## Background

This gene encodes a member of the neurotrophic tyrosine kinase receptor (NTRK) family. This kinase is a membrane-bound receptor that, upon neurotrophin binding, phosphorylates itself and members of the MAPK pathway. The presence of this kinase leads to cell differentiation and may play a role in specifying sensory neuron subtypes. Mutations in this gene have been associated with congenital insensitivity to pain, anhidrosis, self-mutilating behavior, mental retardation and cancer. Alternate transcriptional splice variants of this gene have been found, but only three have been characterized to date.

Note: This product is for in vitro research use only