

## REG3A antibody

Catalog No: #38363

Package Size: #38363-1 50ul #38363-2 100ul

Orders: order@signalwayantibody.com

Support: tech@signalwayantibody.com

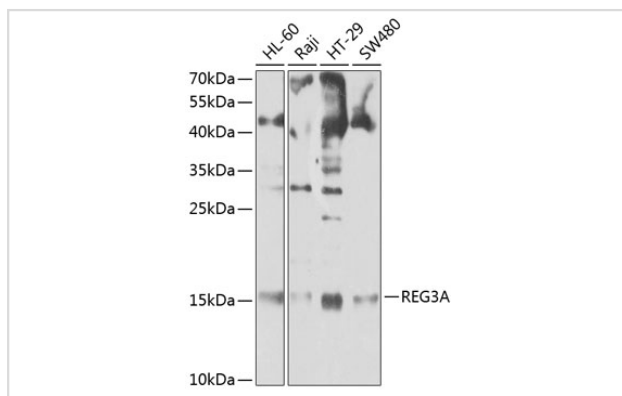
## Description

Product Name	REG3A antibody
Host Species	Rabbit
Clonality	Polyclonal
Isotype	IgG
Purification	Affinity purification
Applications	WB
Species Reactivity	Human,Mouse,Rat
Specificity	The antibody detects endogenous level of total REG3A protein.
Immunogen Type	Recombinant Protein
Immunogen Description	Recombinant fusion protein of human REG3A (NP_002571.1).
Target Name	REG3A
Other Names	REG3A;HIP;HIP/PAP;INGAP;PAP;PAP-H;PAP1;PBCGF;REG-III;REG3
Accession No.	Uniprot:Q06141GeneID:5068
Uniprot	Q06141
GeneID	5068
SDS-PAGE MW	15kDa
Concentration	1.0mg/ml
Formulation	PBS with 0.02% sodium azide,50% glycerol,pH7.3.
Storage	Store at -20°C. Avoid freeze / thaw cycles.

## Application Details

WB 1:500 - 1:2000

## Images



Western blot analysis of extracts of various cell lines, using REG3A antibody.

## Background

---

This gene encodes a pancreatic secretory protein that may be involved in cell proliferation or differentiation. It has similarity to the C-type lectin superfamily. The enhanced expression of this gene is observed during pancreatic inflammation and liver carcinogenesis. The mature protein also functions as an antimicrobial protein with antibacterial activity. Alternate splicing results in multiple transcript variants that encode the same protein.

---

Note: This product is for in vitro research use only