

## ELSPBP1 antibody

Catalog No: #38383

Package Size: #38383-1 50ul #38383-2 100ul

Orders: order@signalwayantibody.com

Support: tech@signalwayantibody.com

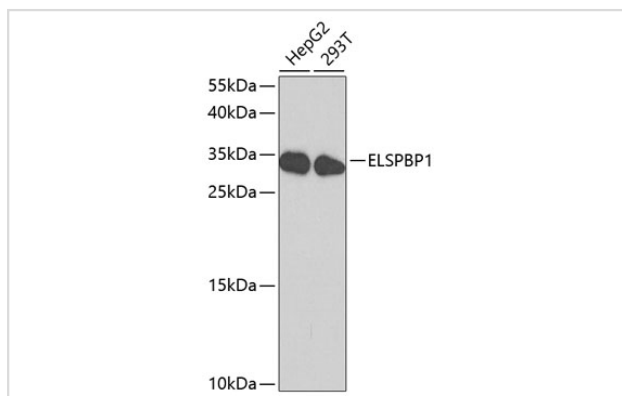
## Description

Product Name	ELSPBP1 antibody
Host Species	Rabbit
Clonality	Polyclonal
Purification	Antibodies were purified by affinity purification using immunogen.
Applications	WB
Species Reactivity	Human
Specificity	The antibody detects endogenous level of total ELSPBP1 protein.
Immunogen Type	Recombinant Protein
Immunogen Description	Recombinant protein of human ELSPBP1.
Target Name	ELSPBP1
Other Names	E12; HE12; EDDM12;
Accession No.	Swiss-Prot#: Q96BH3 NCBI Gene ID: 64100
Uniprot	Q96BH3
GeneID	64100;
SDS-PAGE MW	26kd
Concentration	1.0mg/ml
Formulation	Supplied at 1.0mg/mL in phosphate buffered saline (without Mg <sup>2+</sup> and Ca <sup>2+</sup> ), pH 7.4, 150mM NaCl, 0.02% sodium azide and 50% glycerol.
Storage	Store at -20°C

## Application Details

WB □ 1:500 - 1:2000

## Images



Western blot analysis of extracts of various cell lines, using ELSPBP1 at 1:1000 dilution.

## Background

---

The protein encoded by this gene belongs to the sperm-coating protein family of epididymal origin. This protein and its canine homolog are the first known examples of proteins with four tandemly arranged fibronectin type 2 (Fn2) domains in the Fn2-module protein family. [provided by RefSeq, Jul 2008]

---

Note: This product is for in vitro research use only