

NPPB antibody

Catalog No: #38393

Package Size: #38393-1 50ul #38393-2 100ul

Orders: order@signalwayantibody.com

Support: tech@signalwayantibody.com

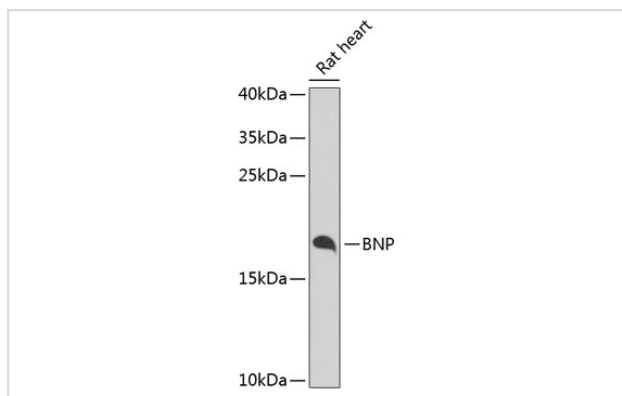
Description

Product Name	NPPB antibody
Host Species	Rabbit
Clonality	Polyclonal
Purification	Antibodies were purified by affinity purification using immunogen.
Applications	WB,IF
Species Reactivity	Human,Mouse,Rat
Specificity	The antibody detects endogenous level of total NPPB protein.
Immunogen Type	Recombinant Protein
Immunogen Description	Recombinant protein of human NPPB.
Target Name	NPPB
Other Names	NPPB; BNP; Gamma-brain natriuretic peptide;
Accession No.	Swiss-Prot#: P16860NCBI Gene ID: 4879
Uniprot	P16860
GeneID	4879;
SDS-PAGE MW	15kd
Concentration	1.0mg/ml
Formulation	Supplied at 1.0mg/mL in phosphate buffered saline (without Mg ²⁺ and Ca ²⁺), pH 7.4, 150mM NaCl, 0.02% sodium azide and 50% glycerol.
Storage	Store at -20°C

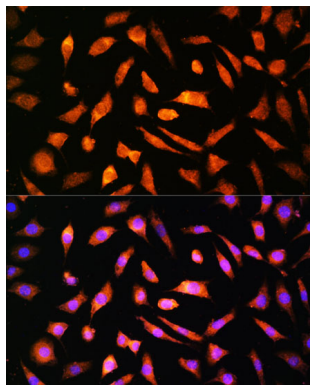
Application Details

WB □ 1:500 - 1:2000IF □ 1:50 - 1:200

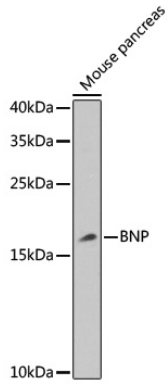
Images



Western blot analysis of extracts of rat heart, using BNP at 1:1000 dilution.



Immunofluorescence analysis of L929 cells using BNP at dilution of 1:100. Blue: DAPI for nuclear staining.



Western blot analysis of extracts of mouse pancreas, using BNP at 1:1000 dilution.

Background

B-type natriuretic peptide (BNP) is a cardiac neurohormone specifically secreted from the ventricles in response to volume expansion and pressure overload (1). The actions of BNP include natriuresis, diuresis, vasorelaxation, and inhibition of renin and aldosterone secretion. It is also found to help restore the body's salt and water balance and improve heart function (2). BNP is co-secreted along with a biologically inactive N-terminal fragment (NT-proBNP). Circulating BNP and NT-proBNP provide important information on cardiac dysfunction, hypervolemia, and risk in patients with severe impairment of kidney function (3).

Note: This product is for in vitro research use only