

P2RY6 antibody

Catalog No: #38404

Package Size: #38404-1 50ul #38404-2 100ul

Orders: order@signalwayantibody.com

Support: tech@signalwayantibody.com

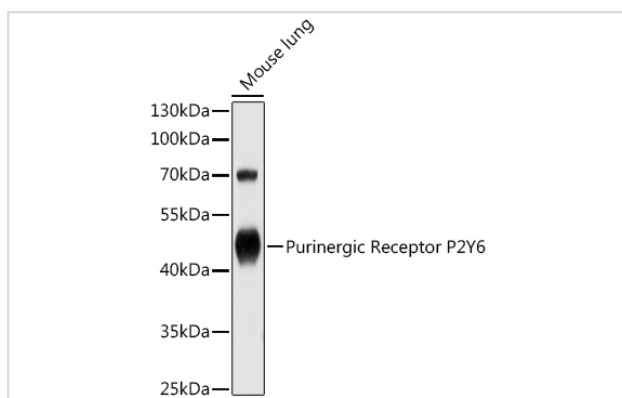
Description

Product Name	P2RY6 antibody
Host Species	Rabbit
Clonality	Polyclonal
Isotype	IgG
Purification	Affinity purification
Applications	WB
Species Reactivity	Human,Mouse
Specificity	The antibody detects endogenous level of total P2RY6 protein.
Immunogen Type	Recombinant Protein
Immunogen Description	Recombinant protein of human Purinergic Receptor P2Y6
Target Name	P2RY6
Other Names	P2RY6;P2Y6
Accession No.	Uniprot:Q15077GeneID:5031
Uniprot	Q15077
GeneID	5031
SDS-PAGE MW	42kDa
Concentration	1.0mg/ml
Formulation	PBS with 0.02% sodium azide,50% glycerol,pH7.3.
Storage	Store at -20°C. Avoid freeze / thaw cycles.

Application Details

WB □ 1:500 - 1:1000

Images



Western blot analysis of extracts of Mouse lung, using Purinergic Receptor P2Y6 antibody.

Background

The product of this gene belongs to the family of P2 receptors, which is activated by extracellular nucleotides and subdivided into P2X ligand-gated ion channels and P2Y G-protein coupled receptors. This family has several receptor subtypes with different pharmacological selectivity, which overlaps in some cases, for various adenosine and uridine nucleotides. This receptor, which is a G-protein coupled receptor, is responsive to UDP, partially responsive to UTP and ADP, and not responsive to ATP. It is proposed that this receptor mediates inflammatory responses. Alternative splicing results in multiple transcript variants that encode different protein isoforms.

Note: This product is for in vitro research use only