

GTF2F1 antibody

Catalog No: #38407

Package Size: #38407-1 50ul #38407-2 100ul

Orders: order@signalwayantibody.com

Support: tech@signalwayantibody.com

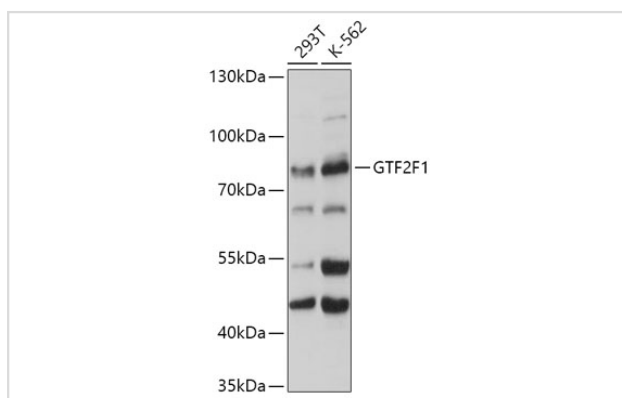
Description

Product Name	GTF2F1 antibody
Host Species	Rabbit
Clonality	Polyclonal
Isotype	IgG
Purification	Affinity purification
Applications	WB,IHC
Species Reactivity	Human,Rat
Specificity	The antibody detects endogenous level of total GTF2F1 protein.
Immunogen Type	Recombinant Protein
Immunogen Description	Recombinant fusion protein of human GTF2F1 (NP_002087.2).
Target Name	GTF2F1
Other Names	BTF4;RAP74;TF2F1;TFIIF;GTF2F1
Accession No.	Uniprot:P35269GeneID:2962
Uniprot	P35269
GeneID	2962
SDS-PAGE MW	74kDa
Concentration	1.0mg/ml
Formulation	PBS with 0.02% sodium azide,50% glycerol,pH7.3.
Storage	Store at -20°C. Avoid freeze / thaw cycles.

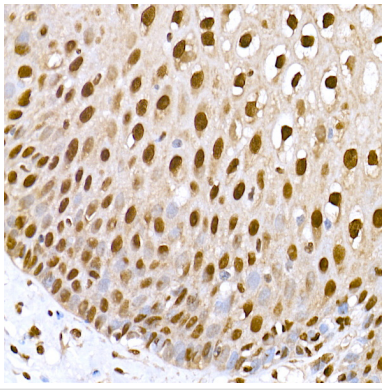
Application Details

WB □ 1:500 - 1:2000 IHC □ 1:50 - 1:200

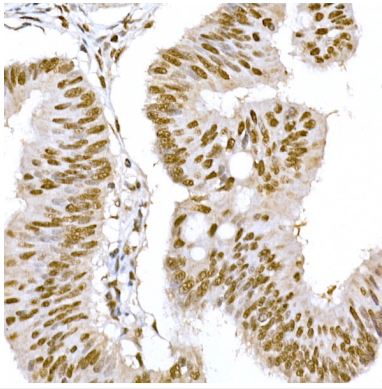
Images



Western blot analysis of extracts of various cell lines, using GTF2F1 antibody.



Immunohistochemistry of paraffin-embedded human esophagus using GTF2F1 Rabbit pAb.



Immunohistochemistry of paraffin-embedded human colon carcinoma using GTF2F1 Rabbit pAb.

Background

TFIIIF is a general transcription initiation factor that binds to RNA polymerase II and helps to recruit it to the initiation complex in collaboration with TFIIIB. It promotes transcription elongation.

Note: This product is for in vitro research use only