

POLR2L antibody

Catalog No: #38408

Package Size: #38408-1 50ul #38408-2 100ul

Orders: order@signalwayantibody.comSupport: tech@signalwayantibody.com

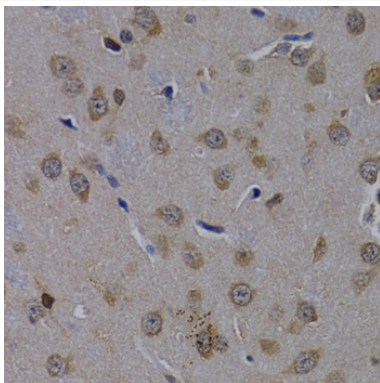
Description

Product Name	POLR2L antibody
Host Species	Rabbit
Clonality	Polyclonal
Purification	Antibodies were purified by affinity purification using immunogen.
Applications	IHC
Species Reactivity	Mouse,Rat
Specificity	The antibody detects endogenous level of total POLR2L protein.
Immunogen Type	Recombinant Protein
Immunogen Description	Recombinant protein of human POLR2L.
Target Name	POLR2L
Other Names	RBP10; RPB10; RPABC5; RPB7.6; hRPB7.6; RPB10beta;
Accession No.	Swiss-Prot#: P62875NCBI Gene ID: 5441
Uniprot	P62875
GeneID	5441;
SDS-PAGE MW	7kd
Concentration	1.0mg/ml
Formulation	Supplied at 1.0mg/mL in phosphate buffered saline (without Mg ²⁺ and Ca ²⁺), pH 7.4, 150mM NaCl, 0.02% sodium azide and 50% glycerol.
Storage	Store at -20°C

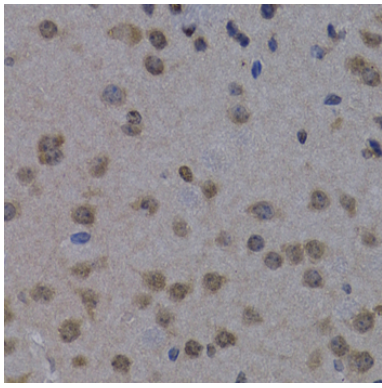
Application Details

IHC 1:50 - 1:200

Images



Immunohistochemistry of paraffin-embedded rat brain using POLR2L at dilution of 1:200 (40x lens).



Immunohistochemistry of paraffin-embedded mouse brain using POLR2L at dilution of 1:200 (40x lens).

Background

This gene encodes a subunit of RNA polymerase II, the polymerase responsible for synthesizing messenger RNA in eukaryotes. The product of this gene contains four conserved cysteines characteristic of an atypical zinc-binding domain. Like its counterpart in yeast, this subunit may be shared by the other two DNA-directed RNA polymerases.

Note: This product is for in vitro research use only