

SAT1 antibody

Catalog No: #38410

Package Size: #38410-1 50ul #38410-2 100ul

Orders: order@signalwayantibody.com

Support: tech@signalwayantibody.com

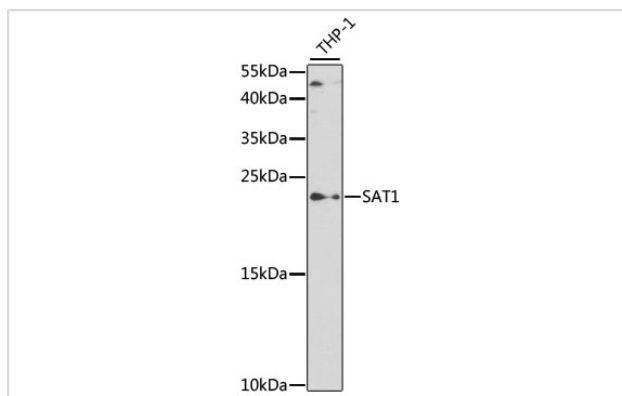
Description

Product Name	SAT1 antibody
Host Species	Rabbit
Clonality	Polyclonal
Purification	Antibodies were purified by affinity purification using immunogen.
Applications	WB
Species Reactivity	Human
Specificity	The antibody detects endogenous level of total SAT1 protein.
Immunogen Type	Recombinant Protein
Immunogen Description	Recombinant protein of human SAT1.
Target Name	SAT1
Other Names	SAT; DC21; KFSD; SSAT; KFSDX; SSAT-1;
Accession No.	Swiss-Prot#: P21673NCBI Gene ID: 6303
Uniprot	P21673
GeneID	6303;
SDS-PAGE MW	20kd
Concentration	1.0mg/ml
Formulation	Supplied at 1.0mg/mL in phosphate buffered saline (without Mg ²⁺ and Ca ²⁺), pH 7.4, 150mM NaCl, 0.02% sodium azide and 50% glycerol.
Storage	Store at -20°C

Application Details

WB □ 1:500 - 1:2000

Images



Western blot analysis of extracts of THP-1 cells, using SAT1 at 1:500 dilution.

Background

The protein encoded by this gene belongs to the acetyltransferase family, and is a rate-limiting enzyme in the catabolic pathway of polyamine metabolism. It catalyzes the acetylation of spermidine and spermine, and is involved in the regulation of the intracellular concentration of polyamines and their transport out of cells. Defects in this gene are associated with keratosis follicularis spinulosa decalvans (KFSD). Alternatively spliced transcripts have been found for this gene.

Note: This product is for in vitro research use only