

## CAMK2B antibody

Catalog No: #38411

Package Size: #38411-1 50ul #38411-2 100ul

Orders: order@signalwayantibody.com

Support: tech@signalwayantibody.com

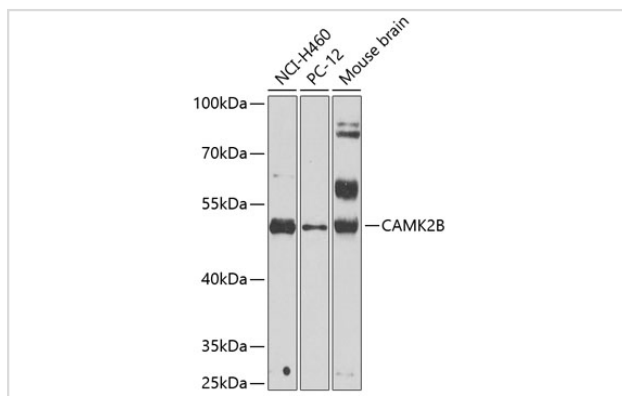
## Description

Product Name	CAMK2B antibody
Host Species	Rabbit
Clonality	Polyclonal
Purification	Antibodies were purified by affinity purification using immunogen.
Applications	WB
Species Reactivity	Human,Mouse,Rat
Specificity	The antibody detects endogenous level of total CAMK2B protein.
Immunogen Type	Recombinant Protein
Immunogen Description	Recombinant protein of human CAMK2B.
Target Name	CAMK2B
Other Names	CAM2; CAMK2; CAMKB;
Accession No.	Swiss-Prot#: Q13554NCBI Gene ID: 816
Uniprot	Q13554
GeneID	816;
SDS-PAGE MW	72kd
Concentration	1.0mg/ml
Formulation	Supplied at 1.0mg/mL in phosphate buffered saline (without Mg <sup>2+</sup> and Ca <sup>2+</sup> ), pH 7.4, 150mM NaCl, 0.02% sodium azide and 50% glycerol.
Storage	Store at -20°C

## Application Details

WB □ 1:500 - 1:2000

## Images



Western blot analysis of extracts of various cell lines, using CAMK2B at 1:1000 dilution.

## Background

---

The product of this gene belongs to the serine/threonine protein kinase family and to the Ca(2+)/calmodulin-dependent protein kinase subfamily. Calcium signaling is crucial for several aspects of plasticity at glutamatergic synapses. In mammalian cells, the enzyme is composed of four different chains: alpha, beta, gamma, and delta. The product of this gene is a beta chain. It is possible that distinct isoforms of this chain have different cellular localizations and interact differently with calmodulin. Eight transcript variants encoding eight distinct isoforms have been identified for this gene.

---

Note: This product is for in vitro research use only