

EFNB1 antibody

Catalog No: #38414

Package Size: #38414-1 50ul #38414-2 100ul

Orders: order@signalwayantibody.comSupport: tech@signalwayantibody.com

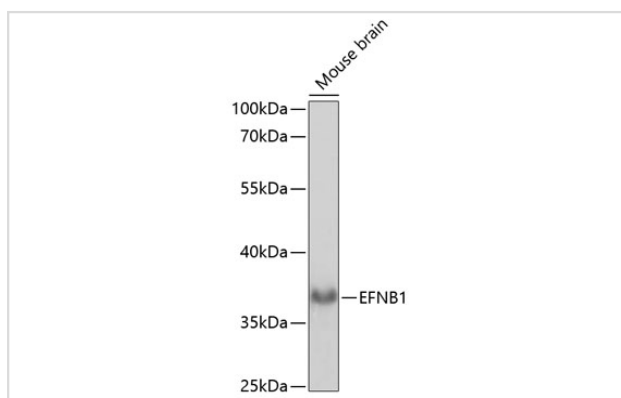
Description

| | |
|-----------------------|--------------------------------------------------------------------------------------------------------------------------------------------------------------|
| Product Name | EFNB1 antibody |
| Host Species | Rabbit |
| Clonality | Polyclonal |
| Purification | Antibodies were purified by affinity purification using immunogen. |
| Applications | WB |
| Species Reactivity | Mouse |
| Specificity | The antibody detects endogenous level of total EFNB1 protein. |
| Immunogen Type | Peptide |
| Immunogen Description | A synthetic peptide of human EFNB1. |
| Target Name | EFNB1 |
| Other Names | CFND; CFNS; EFL3; EPLG2; Elk-L; LERK2; |
| Accession No. | Swiss-Prot#: P98172NCBI Gene ID: 1947 |
| Uniprot | P98172 |
| GeneID | 1947; |
| SDS-PAGE MW | 38kd |
| Concentration | 1.0mg/ml |
| Formulation | Supplied at 1.0mg/mL in phosphate buffered saline (without Mg ²⁺ and Ca ²⁺), pH 7.4, 150mM NaCl, 0.02% sodium azide and 50% glycerol. |
| Storage | Store at -20°C |

Application Details

WB □ 1:500 - 1:2000

Images



Western blot analysis of extracts of mouse brain, using EFNB1 at 1:1000 dilution.

Background

The protein encoded by this gene is a type I membrane protein and a ligand of Eph-related receptor tyrosine kinases. It may play a role in cell adhesion and function in the development or maintenance of the nervous system.

Note: This product is for in vitro research use only