

GYS1 antibody

Catalog No: #38415

Package Size: #38415-1 50ul #38415-2 100ul

Orders: order@signalwayantibody.com

Support: tech@signalwayantibody.com

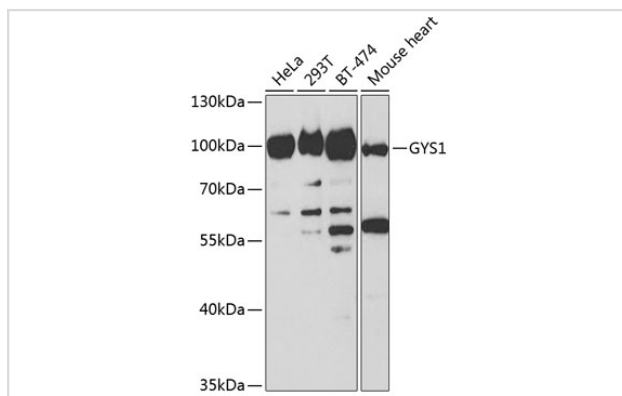
Description

Product Name	GYS1 antibody
Host Species	Rabbit
Clonality	Polyclonal
Purification	Antibodies were purified by affinity purification using immunogen.
Applications	WB,IHC,IF
Species Reactivity	Human,Mouse,Rat
Specificity	The antibody detects endogenous level of total GYS1 protein.
Immunogen Type	Recombinant Protein
Immunogen Description	Recombinant protein of human GYS1.
Target Name	GYS1
Other Names	GSY; GYS;
Accession No.	Swiss-Prot#: P13807NCBI Gene ID: 2997
Uniprot	P13807
GeneID	2997;
SDS-PAGE MW	84kd
Concentration	1.0mg/ml
Formulation	Supplied at 1.0mg/mL in phosphate buffered saline (without Mg ²⁺ and Ca ²⁺), pH 7.4, 150mM NaCl, 0.02% sodium azide and 50% glycerol.
Storage	Store at -20°C

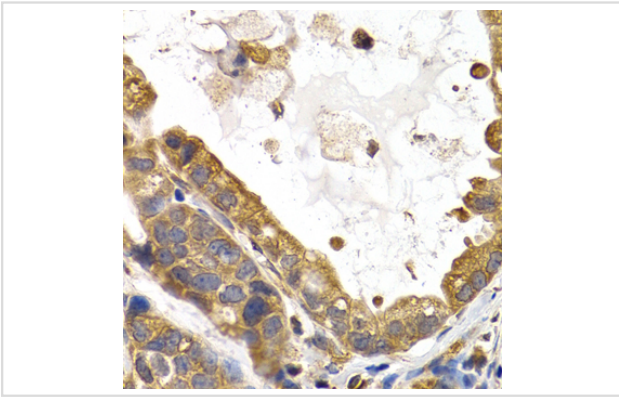
Application Details

WB □ 1:500 - 1:2000 IHC □ 1:50 - 1:200 IF □ 1:50 - 1:100

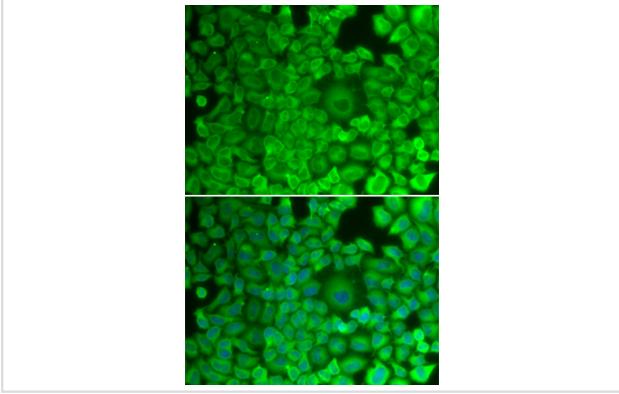
Images



Western blot analysis of extracts of various cell lines, using GYS1 at 1:1000 dilution.



Immunohistochemistry of paraffin-embedded human stomach cancer using GYS1 at dilution of 1:200 (40x lens).



Immunofluorescence analysis of HeLa cells using GYS1 .
Blue: DAPI for nuclear staining.

Background

The protein encoded by this gene catalyzes the addition of glucose monomers to the growing glycogen molecule through the formation of alpha-1,4-glycoside linkages. Mutations in this gene are associated with muscle glycogen storage disease. Alternatively spliced transcript variants encoding different isoforms have been found for this gene.

Note: This product is for in vitro research use only