

NEDD9 antibody

Catalog No: #38416

Package Size: #38416-1 50ul #38416-2 100ul

Orders: order@signalwayantibody.com

Support: tech@signalwayantibody.com

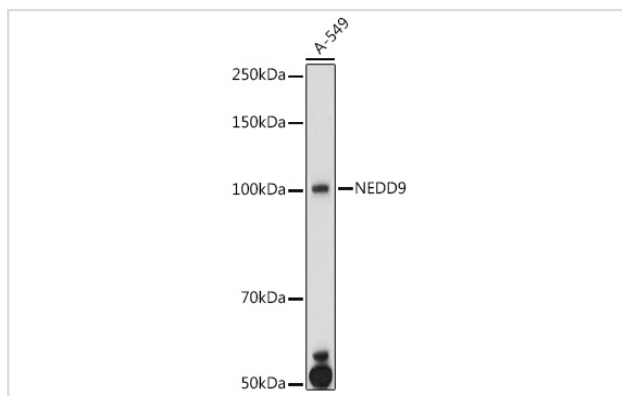
Description

Product Name	NEDD9 antibody
Host Species	Rabbit
Clonality	Polyclonal
Isotype	IgG
Purification	Affinity purification
Applications	WB,IHC,IF
Species Reactivity	Human,Mouse,Rat
Specificity	The antibody detects endogenous level of total NEDD9 protein.
Immunogen Type	Recombinant Protein
Immunogen Description	Recombinant fusion protein of human NEDD9 (NP_892011.2).
Target Name	NEDD9
Other Names	NEDD9;CAS-L;CAS2;CASL;CASS2;HEF1
Accession No.	Uniprot:Q14511GeneID:4739
Uniprot	Q14511
GeneID	4739
SDS-PAGE MW	105KDa
Concentration	1.0mg/ml
Formulation	PBS with 0.02% sodium azide,50% glycerol,pH7.3.
Storage	Store at -20°C. Avoid freeze / thaw cycles.

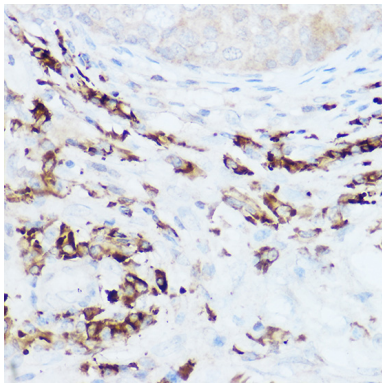
Application Details

WB □ 1:500 - 1:2000 IHC □ 1:50 - 1:200 IF □ 1:50 - 1:200

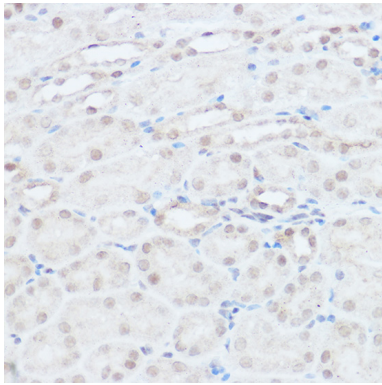
Images



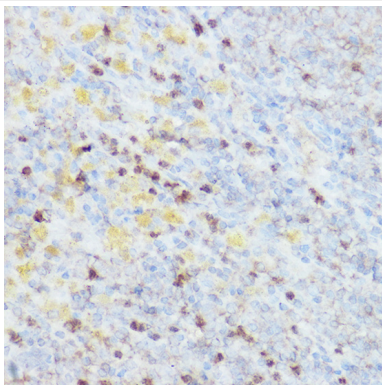
Western blot analysis of extracts of A-549 cells, using NEDD9 antibody.



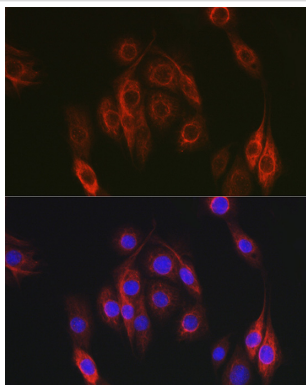
Immunohistochemistry of paraffin-embedded human breast cancer using NEDD9 Rabbit pAb.



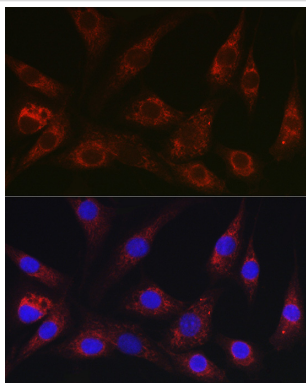
Immunohistochemistry of paraffin-embedded mouse kidney using NEDD9 Rabbit pAb.



Immunohistochemistry of paraffin-embedded rat spleen using NEDD9 Rabbit pAb.



Immunofluorescence analysis of PC-12 cells using NEDD9 Rabbit pAb.



Immunofluorescence analysis of NIH/3T3 cells using NEDD9 Rabbit pAb.

Background

The protein encoded by this gene is a member of the CRK-associated substrates family. Members of this family are adhesion docking molecules that mediate protein-protein interactions for signal transduction pathways. This protein is a focal adhesion protein that acts as a scaffold to regulate signaling complexes important in cell attachment, migration and invasion as well as apoptosis and the cell cycle. This protein has also been reported to have a role in cancer metastasis. Alternative splicing results in multiple transcript variants.

Note: This product is for in vitro research use only