

IL8 antibody

Catalog No: #38419

Package Size: #38419-1 50ul #38419-2 100ul

Orders: order@signalwayantibody.com

Support: tech@signalwayantibody.com

Description

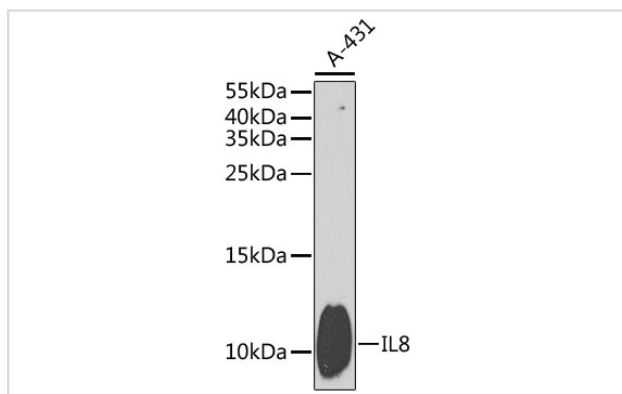
Product Name	IL8 antibody
Host Species	Rabbit
Clonality	Polyclonal
Purification	Antibodies were purified by affinity purification using immunogen.
Applications	WB IHC
Species Reactivity	Human Rat
Specificity	The antibody detects endogenous level of total IL8 protein.
Immunogen Type	Recombinant Protein
Immunogen Description	Recombinant protein of human IL8.
Target Name	IL8
Other Names	NAF; GCP1; LECT; LUCT; NAP1; CXCL8; GCP-1; LYNAF; MDNCF; MONAP; NAP-1;
Accession No.	Swiss-Prot#: P10145NCBI Gene ID: 3576
Uniprot	P10145
GeneID	3576;
SDS-PAGE MW	11kd
Concentration	1.0mg/ml
Formulation	Supplied at 1.0mg/mL in phosphate buffered saline (without Mg ²⁺ and Ca ²⁺), pH 7.4, 150mM NaCl, 0.02% sodium azide and 50% glycerol.
Storage	Store at -20°C

Application Details

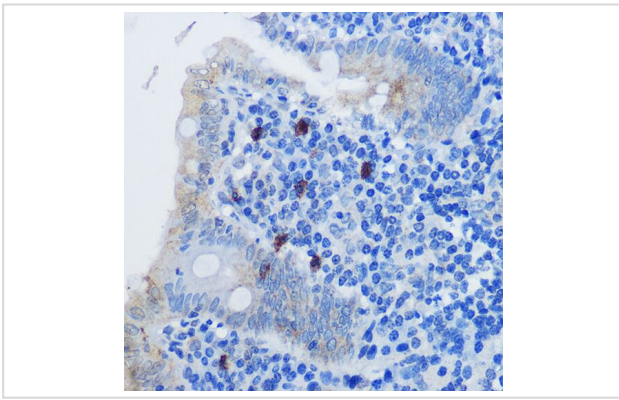
WB 1:500 - 1:2000

IHC 1:50 - 1:200

Images



Western blot analysis of extracts of A-431 cells, using IL8 at 1:1000 dilution.



Immunohistochemistry of paraffin-embedded human appendix using IL8 Rabbit pAb at dilution of 1:100 (40x lens).

Background

The protein encoded by this gene is a member of the CXC chemokine family. This chemokine is one of the major mediators of the inflammatory response. This chemokine is secreted by several cell types. It functions as a chemoattractant, and is also a potent angiogenic factor. This gene is believed to play a role in the pathogenesis of bronchiolitis, a common respiratory tract disease caused by viral infection. This gene and other ten members of the CXC chemokine gene family form a chemokine gene cluster in a region mapped to chromosome 4q.

Note: This product is for in vitro research use only