

ITGB3 antibody

Catalog No: #38420

Package Size: #38420-1 50ul #38420-2 100ul

Orders: order@signalwayantibody.comSupport: tech@signalwayantibody.com

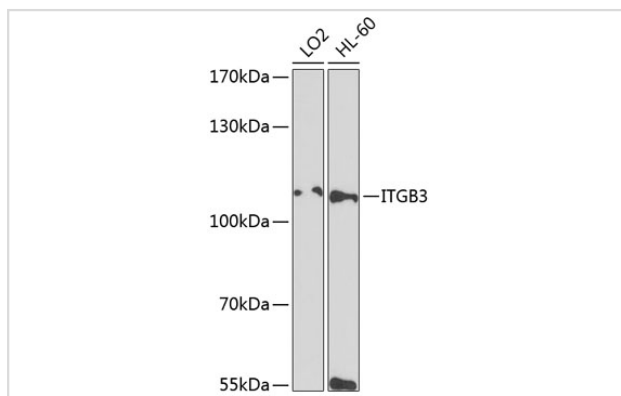
Description

Product Name	ITGB3 antibody
Host Species	Rabbit
Clonality	Polyclonal
Purification	Antibodies were purified by affinity purification using immunogen.
Applications	WB,IHC
Species Reactivity	Human,Mouse,Rat
Specificity	The antibody detects endogenous level of total ITGB3 protein.
Immunogen Type	Recombinant Protein
Immunogen Description	Recombinant protein of human ITGB3.
Target Name	ITGB3
Other Names	GT; CD61; GP3A; BDPLT2; GPIIIa; BDPLT16;
Accession No.	Swiss-Prot#: P05106NCBI Gene ID: 3690
Uniprot	P05106
GeneID	3690;
SDS-PAGE MW	87kd
Concentration	1.0mg/ml
Formulation	Supplied at 1.0mg/mL in phosphate buffered saline (without Mg ²⁺ and Ca ²⁺), pH 7.4, 150mM NaCl, 0.02% sodium azide and 50% glycerol.
Storage	Store at -20°C

Application Details

WB □ 1:500 - 1:2000 IHC □ 1:50 - 1:200

Images



Western blot analysis of extracts of various cell lines, using ITGB3 at 1:1000 dilution.

Background

The ITGB3 protein product is the integrin beta chain beta 3. Integrins are integral cell-surface proteins composed of an alpha chain and a beta chain. A given chain may combine with multiple partners resulting in different integrins. Integrin beta 3 is found along with the alpha IIb chain in platelets. Integrins are known to participate in cell adhesion as well as cell-surface mediated signalling.

Note: This product is for in vitro research use only